

Privacy Settings

We use cookies to optimize our website and our service.

- ☒ Functional
- ☒ Statistics
- ☒ Marketing

Save

Functional only

Accept all

ASIAN CIVILISATIONS MUSEUM

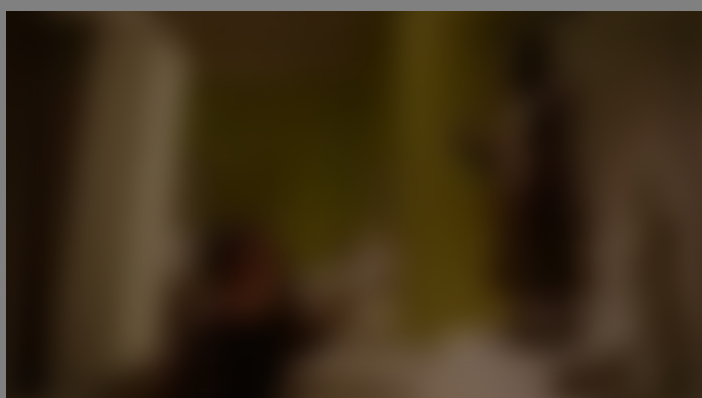
Enlightened Ways: The Many Streams of Buddhist Art in Thailand
30 Nov 2012 – 17 Apr 2013

This exhibition, showcasing over 1,500 years of Buddhist art from Thailand, is the most comprehensive exploration of the subject ever organised. Images of the Buddha, precious gold ornaments, gilded and lacquered furniture, and amulets are among the highlights drawn from 11 Thai National Museums, the collections of the ACM, as well as museums and private



The Asian Civilisations Museum, Singapore, in collaboration with the Fine Arts Department, Ministry of Culture, Thailand, presents "Enlightened Ways: The many streams of Buddhist Art in Thailand" until April 2013.

The exhibition explores the many forms of Buddhist art in Thailand through more than 100 important works, the majority drawn from 11 Thai national museums. Sculptures, paintings, ceramics, textiles, and furniture show the wide range and diverse influences of this artistic



tradition.

Enlightened Ways : Principal

Curator, Heidi Tan from [ACM Channel](#) on [Vimeo](#). Buddhist art in Thailand draws on both Hindu and Buddhist origins and incorporates animistic traditions as well. From the earliest beginnings, the worship of Hindu deities, nature spirits, and ancestors is evident. The practice of merit making is also an essential part of Thai Buddhism and one of the reasons why images of the Buddha continue to be so prevalent in daily life. Creating images and decorative arts are ways to make merit in this life and the next. **See these rare treasures and learn how cross-cultural influences were essential to the development of Thai Buddhist art.**

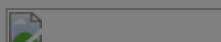
*Enlightened Ways is part of the **Thai CulturalFest** organised by the Singapore National Heritage Board.*

***View all Asia-Europe Museum Network Members from
Singapore and Thailand***

SIMILAR CONTENT

BY JORDI BALTÀ PORTOLÉS
14 JUN 2019 - 26 JAN 2020

Exhibition: "Thai Buddhist Tales" | Ireland



FROM - TO
17 DEC 2011 - 03 JUN 2012

Exhibition: In the steps of the Buddha, Melbourne

BY JORDI BALTÀ PORTOLÉS

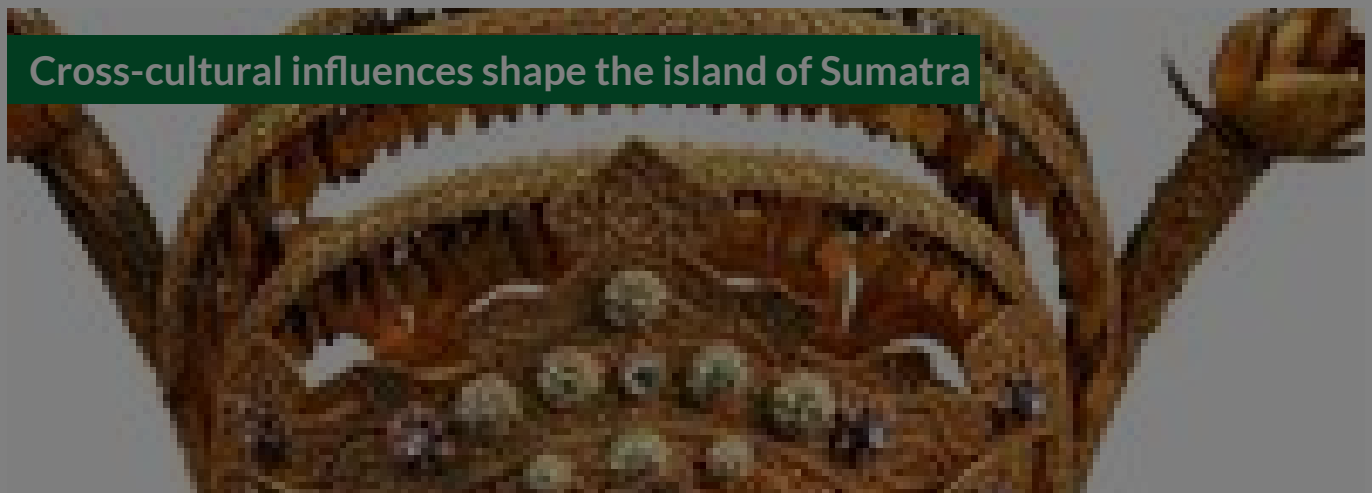
12 FEB 2016 - 14 AUG 2016

Exhibition: "The Buddha" | The Netherlands



BY **BHARTI LALWANI**
02 NOV 2010

Cross-cultural influences shape the island of Sumatra



FEATURES

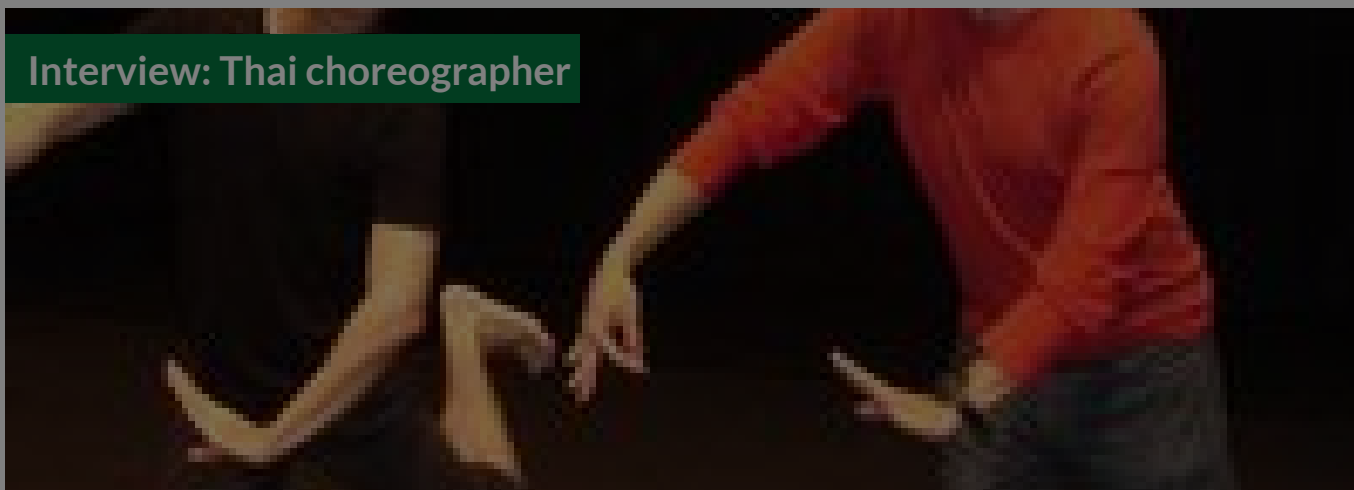
INDONESIA NETHERLANDS SINGAPORE

BY **JORDI BALTÀ PORTOLÉS**
30 MAY 2016

MGC Asian Traditional Textiles Museum, Cambodia

BY VANINI BELARMINO
07 NOV 2009

Interview: Thai choreographer



FEATURES
THAILAND

COUNTRIES
SINGAPORE THAILAND

THEMES
HERITAGE MUSEUMS

ABOUT ASEF CULTURE360

culture360.asef.org brings Asia and Europe closer by providing information, facilitating dialogue and stimulating reflection on the arts and culture of the two regions.

MORE ABOUT ASEF CULTURE360 | [FAQ](#) | [f](#) [X](#) [@](#)

This website was created and maintained with the financial support of the European Union. Its contents are the sole responsibility of the Asia-Europe Foundation (ASEF) and do not necessarily reflect the views of the European Union.



About us
Team
Partners
FAQ

[Brand guidelines](#)
[How to partner with us](#)
[Contact us](#)
[#ASEFCulture](#)

ASIA-EUROPE FOUNDATION (ASEF) 2017 | [TERMS OF SERVICE & PRIVACY POLICY](#) | [CREATIVE COMMONS
ATTRIBUTION - NON COMMERCIAL SHARE](#)