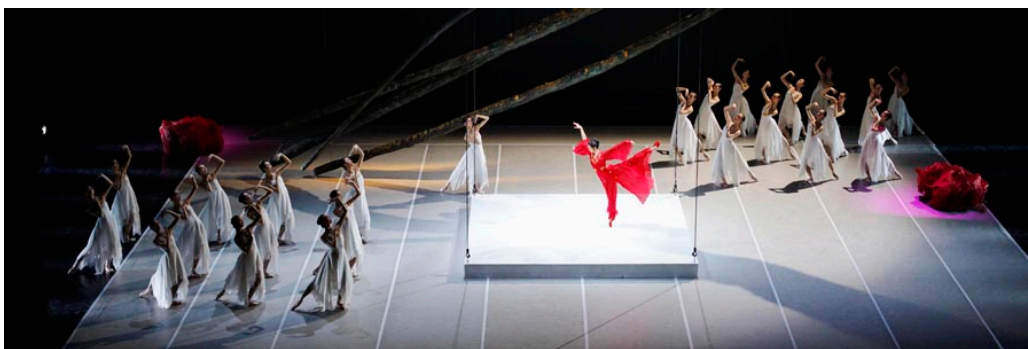


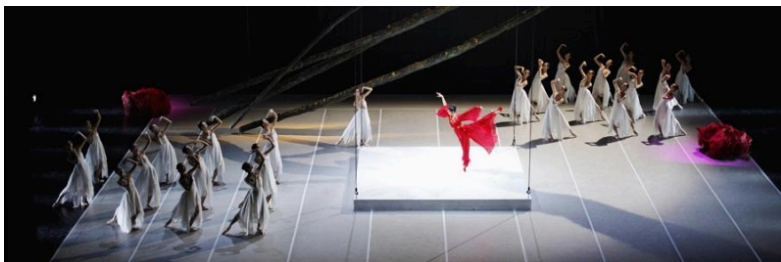
NEWS & EVENTS > Edinburgh International Festival | focus on Asia

FROM - TO
12 AUG 2011 - 04 SEP 2011

Edinburgh International Festival | focus on Asia



[caption id="attachment_8432" align="alignright" width="392"
caption="The National Ballet of China | The Peony Pavilion"]



[/caption]

Edinburgh International Festival announces the programme for 2011: an exploration and celebration of the vibrant and diverse cultures of **Asia** and the long standing influences on the cultural landscape of the west. Artists from China, India, Indonesia, Japan, Korea and Vietnam with others from Europe and beyond gather in Edinburgh for three weeks of classical and contemporary music, dance, theatre, opera and visual arts. The festival runs August 12 - September 4 2011. Bringing together east and west *The Peony Pavilion*, performed by the **National Ballet of China** with western classical ballet, a classic symphony orchestra, traditional Chinese instruments, and a quintessentially Chinese story demonstrates the ideas

and ambitions of Festival 2011. This beautiful and moving ballet is based on a love story by one of China's greatest writers, and contemporary of Shakespeare, Tang Xianzu. *The Tempest* is re-imagined by **Mokwha Repertory Company** from Seoul in a distinctive production weaving Shakespeare's famous tale with fifth-century Korean chronicles. In another adaptation of Shakespeare, **Shanghai Peking Opera Troupe** retells the familiar tale of *Hamlet* setting it in China and performing the tragedy in the extraordinary acrobatic and elaborately costumed style of Jingju opera. Japanese artist **Hiroshi Sugimoto**, one of the world's leading artists, brings two poetic series of work not presented before in Europe. *Lightning Fields* and *Photogenic Drawings* reveal Sugimoto's dramatic exploration of the very nature of photography, presented in partnership with the Scottish National Gallery of Modern Art. Dance at Festival 2011 includes French-Vietnamese choreographer **Ea Sola**'s re-creation of her critically acclaimed meditation on the human cost of war, *Drought and Rain*, New York-based Chinese choreographer **Shen Wei**'s *Re-Triptych*, the south Indian **Nrityagram Dance Ensemble** and Korean choreographer, **Eun-Me Ahn** and her company's colourful tale of Princess Bari. Singapore's **T'ang Quartet** perform and a Conversations event features the quartet, Ng Yu-Ying, Ang Chek Meng, Lionel Tan and Leslie Tan talking about their work as one of Asia's foremost classical string quartets. **Continental Shifts** is a series of talks and debates on Festival themes and ideas, presented in association with the British Council, The Royal Society of Edinburgh and the Confucius Institute for Scotland. A diverse range of Festival performers, cultural commentators, international academics and intellectuals come together to discuss perspectives and ideas effecting our understanding and shifting perceptions of the global landscape with special reference to Asia. [DOWNLOAD pdf.](#) [press release](#) with all the programme details for EIF 2011

SIMILAR CONTENT

FROM - TO
12 AUG 2011 - 04 SEP 2011

Asia meets Europe in Edinburgh



POSTED ON
28 MAR 2013

Shanghai residency fosters Asia-Europe artists' collaboration



NEWS

CHINA GERMANY UNITED KINGDOM

FROM - TO
01 MAR 2012 - 01 OCT 2012

UK Now Arts Festival | China



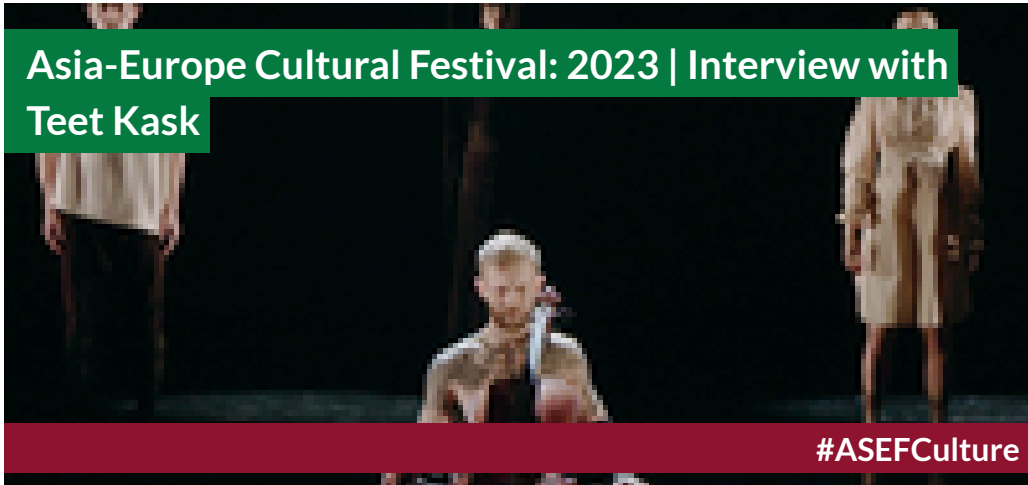
EVENTS

ASIA CHINA UNITED KINGDOM

BY **KERRINE GOH**

25 SEP 2023

Asia-Europe Cultural Festival: 2023 | Interview with Teet Kask



#ASEFCulture

INSIGHTS

ESTONIA JAPAN KOREA SINGAPORE

POSTED ON

27 AUG 2013

Royal New Zealand Ballet



ORGANISATIONS DIRECTORY

NEW ZEALAND

BY **LAI DEL ROSARIO**

20 MAY 2016

A shared vision from studio to stage | Opera as collaboration



FEATURES

WEBSITE

[HTTP://WWW.EIF.CO.UK](http://www.eif.co.uk)

COUNTRIES

ASIA INTERNATIONAL UNITED KINGDOM

DISCIPLINES

DANCE FESTIVALS MUSIC PERFORMING ARTS THEATRE VISUAL ARTS

ABOUT ASEF CULTURE360

culture360.asef.org brings Asia and Europe closer by providing information, facilitating dialogue and stimulating reflection on the arts and culture of the two regions.

MORE ABOUT ASEF CULTURE360 | [FAQ](#) | [f](#) [X](#) [@](#)

This website was created and maintained with the financial support of the European Union. Its contents are the sole responsibility of the Asia-Europe Foundation (ASEF) and do not necessarily reflect the views of the European Union.



About us
Team
Partners
FAQ
Brand guidelines
How to partner with us
Contact us

#ASEFCulture

ASIA-EUROPE FOUNDATION (ASEF) 2017 | [TERMS OF SERVICE & PRIVACY POLICY](#) | [CREATIVE COMMONS ATTRIBUTION - NON COMMERCIAL SHARE](#)