

Privacy Settings

We use cookies to optimize our website and our service.

- ☒ Functional
- ☒ Statistics
- ☒ Marketing

Save

Functional only

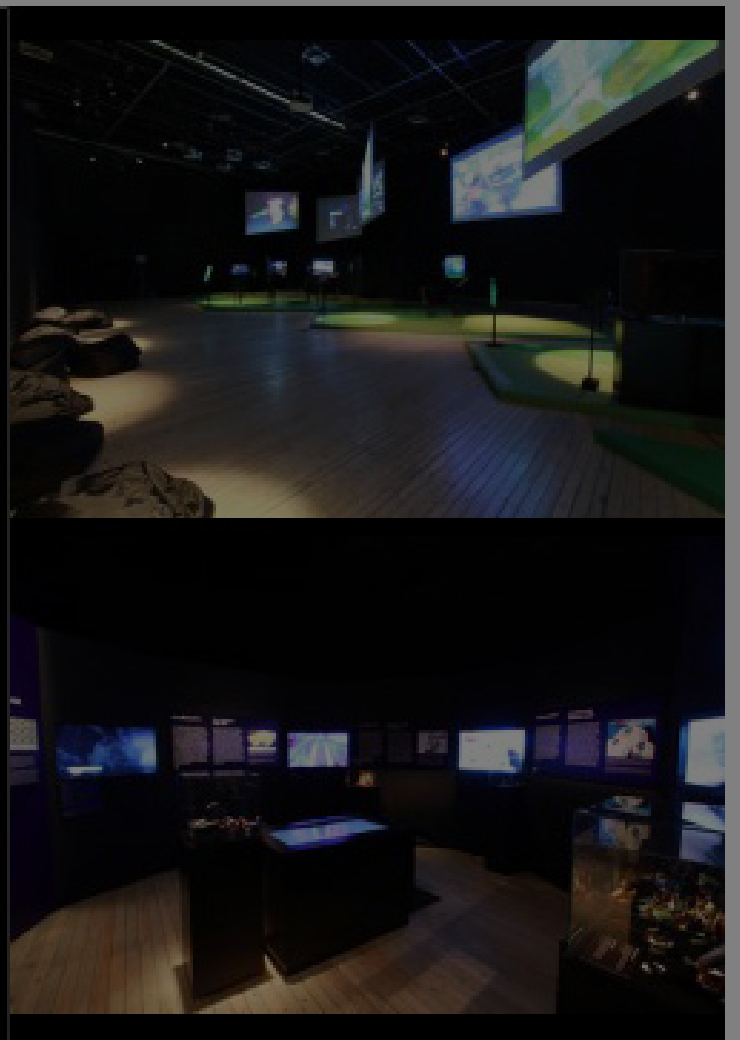
Accept all

WEBSITE
[HTTP://WWW.TCDC.ORG.TH/](http://www.tcdc.or.th/)

COUNTRIES
[ASIA](#) [THAILAND](#)
[UNITED KINGDOM](#)

THEME
[ECONOMY AND SOCIETY](#)

DISCIPLINES
[DESIGN](#) [FESTIVALS](#) [NEW MEDIA](#)
[VISUAL ARTS](#)



A collaboration between TCDC and British Council, the “[DigiPlay: Thai-UK Digital Festival](#)” exhibition focuses on the Thai – UK video games and animation industry. Born in the 1940’s, the industry has grown to be one of the driving forces of the UK economy today and a key creative industry for Thailand’s future. DigiPlay tracks the technological evolution of digital games and playing devices from the age before the console to today’s cutting edge computer game. Come and play some of the most popular games from the UK’s top class developers as well as small yet talented studios, such as Lego Harry Potter, Enslaved: Odyssey to the West, Little Big Planet 2 and Chimes, and gain an insight into the creative process of game development. Experience the next generation of entertainment with Kinect, an innovative device which enables you to control and interact with the game without the need to touch a game controller. Selections of UK prestigious animated films, advertisings, music videos and series from world renowned studios like Passion Pictures and Aardman animation will also be displayed. Furthermore, the exhibition showcases notable works from local talents. Leading game and animation studios such as Igloo Studio, Imagimax, Kantana, PromptNow, Studio Hive and The Monk Studio, will present their best and upcoming projects. King Naresuan Online game by PromptNow, for instance, simulates the legendary battles of the great king from Ayutthaya period. Also featured are creations by students from top Thai universities in digital animation: Silpakorn University and Bangkok University. **Free Admission** TCDC, 6th Fl., The Emporium Shopping Complex, 10.30 – 21.00. (Closed Mondays) Source: [TCDC](#)

Similar content

POSTED ON
14 MAY 2012

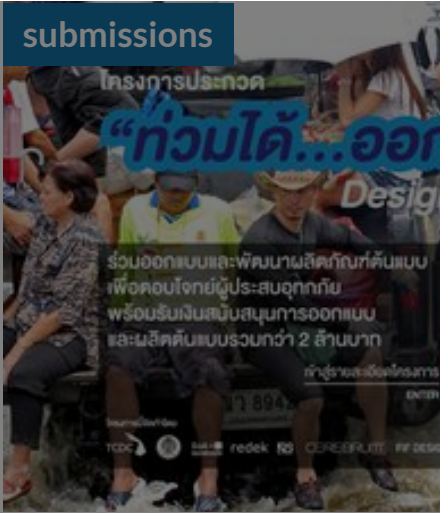
Design for Flood |
TCDC Bangkok | call for

POSTED ON
28 AUG 2011

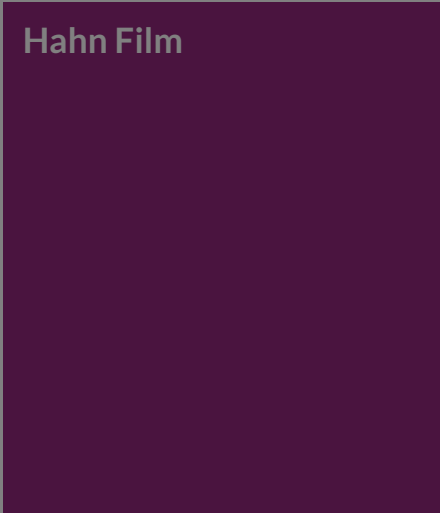
Japan Media Arts
Festival | open call

POSTED ON
30 JUN 2013

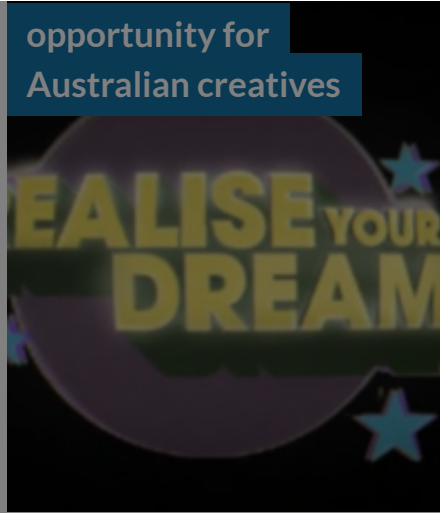
Realise Your Dream |
British Council



POSTED ON
13 MAY 2011



POSTED ON
06 AUG 2021



POSTED ON
14 APR 2023



ABOUT ASEF CULTURE360

culture360.asef.org brings Asia and Europe closer by providing information, facilitating dialogue and stimulating reflection on the arts and culture of the two regions.

[MORE ABOUT ASEF CULTURE360](#) | [FAQ](#)

