

Privacy Settings

We use cookies to optimize our website and our service.

- ☒ Functional
- ☒ Statistics
- ☒ Marketing

Save

Functional only

Accept all

Creative Residency Network | Australia

WEBSITE  
[HTTP://ASIALINK.UNIMELB.EDU.A...](http://asialink.unimelb.edu.au)

COUNTRIES  
[ASIA](#) [AUSTRALIA](#) [EUROPE](#)

THEME  
[CULTURAL POLICY](#)

meeting of  
the Asia-Australia-Europe Creative  
Residency Network | Australia



res artis

Asia- Australia- Europe  
Creative Residency Network

[caption id="attachment\_41929" align="aligncenter"

width="620"]



Participants

and speakers of the Inaugural Meeting of the Asia-Australia-Europe Creative Residency Network[/caption] The inaugural meeting of the **Asia-Australia-Europe Creative Residency Network** is supported by the Asia-Europe Foundation (ASEF) as one of the 3 projects selected this year through [ASEF Creative Networks programme](#). The event began on 9 May with a meeting on **"Mapping and Assessment"** that will continue the development of Res Artis' assessment protocols for the art sector.

*What is already known of mapping residencies, and by whom in Australia, Asia and Europe? What is the best way of mapping arts residencies and the value? The discussions will look at cultural factors in Asia, Europe and Australia to consider in evaluating the success of an arts residency programme.*

The second meeting organised by the European network [On-The-Move](#) and [Res Artis](#) took place on 12 May. Funders and stakeholders from Europe, Asia and Australia were invited to brainstorm on the issue of ***access and reciprocity in relation to cultural mobility***. Funding models for mobility today face a lot of challenges - old and new. Some funding bodies connect diverse regions of the world, while others have a regional focus. Despite the current models - access to local, national and international stakeholders and culturally sensitive expertise is crucial. This brainstorming meeting between key mobility funders and stakeholders addressed questions such as **what issues do funding bodies face when supporting mobility and how new partnerships are required to adapt current funding models to address established needs**. This meeting is also a continuation of the discussions started in 2013 in Prague with the meeting of over [50 Asian and European cultural mobility funders](#) and other stakeholders (co-organised with the support of the Asia-Europe Creative Encounters programme). ASEF's project manager Valentina Riccardi participated in the sessions and presented ASEF's role as a funder of cultural mobility namely through the Asia-Europe Creative Encounters and ASEF Creative Networks programmes. She also announced the upcoming 3rd Edition of the [Funding opportunities for international cultural exchange in Asia](#) to be published in August on [culture360.asef.org](http://culture360.asef.org).  
[Overview Asia Australia Europe mobility program May 2014 FNL](#) For more information:  
<https://culture360.asef.org/asef-news/asef-to-support-several-initiatives-through-creative-encounters-and-asef-creative-networks/>  
<http://www.asef.org/index.php/projects/themes/culture/3214-culture360-supports-the-meeting-on-access-and-reciprocity-in-cultural-mobility> <http://on-the-move.org/news/article/16213/access-and-reciprocity-a-brainstorming-meeting/>

## Similar content

POSTED ON  
29 DEC 2014

Mobility Funding  
Guides for 49 countries  
of Asia and Europe  
launched!

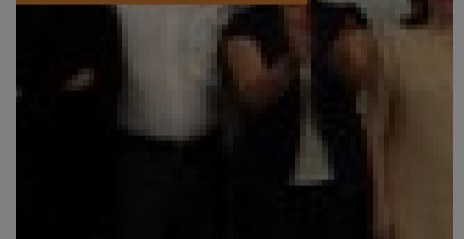
POSTED ON  
27 MAR 2018

Cultural Mobility in  
Asia & Europe



POSTED ON  
19 MAR 2015

ASEF supports the  
launch of SEAAA  
Mobility Platform  
between Asia and  
Europe | Greece



POSTED ON  
11 MAY 2015

SEAAA Mobility  
Platform in Athens |  
Report



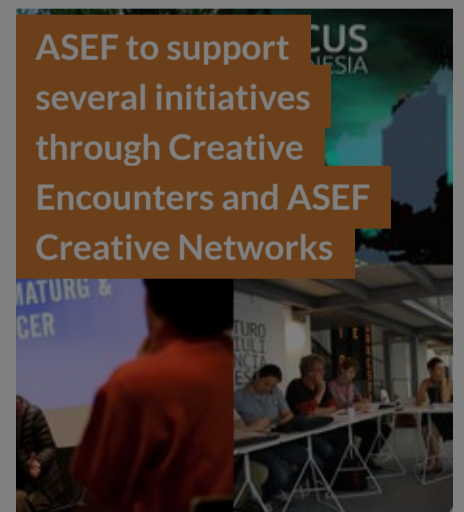
POSTED ON  
01 SEP 2021

Resartis General  
Conference 2021 |  
Defining the new  
decade



POSTED ON  
10 JAN 2014

ASEF to support  
several initiatives  
through Creative  
Encounters and ASEF  
Creative Networks



## ABOUT ASEF CULTURE360

[culture360.asef.org](http://culture360.asef.org) brings Asia and Europe closer by providing information, facilitating dialogue and stimulating reflection on the arts and culture of the two regions.

[MORE ABOUT ASEF CULTURE360](#) | [FAQ](#)

