

Privacy Settings

We use cookies to optimize our website and our service.

- ☒ Functional
- ☒ Statistics
- ☒ Marketing

Save

Functional only

Accept all

WEBSITE
[HTTPS://WWW.EN.JIMEIARLES.COM/](https://www.en.jimeiarles.com/)

COUNTRIES
[CHINA](#) [FRANCE](#) [INDIA](#)

DISCIPLINES
[FESTIVALS](#) [PHOTOGRAPHY](#)

International Photo Festival 2019



Every year, eight exhibitions shown during the summer at Rencontres d'Arles travel to China's Jimei x Arles International Photo Festival. This year the festival runs November 22 1019 - January 5 2020 and features work from China, an India country focus and more.

Read more about the [exhibitions from Arles coming to Jimei](#)

Jimei x Arles also features [China Pulse](#) - **China Pulse** aims at taking the pulse of current trends in Chinese photography. This year it features works from two artists who belong to the 1980's generation: Luo Yang and Liu Ke.

[Greetings from India](#) - Every year, Jimei x Arles focuses on the photographic scene of an Asian country. After [South Korea](#) (2018) and [Indonesia](#) (2017), this year Jimei x Arles invites India, with exhibitions curated by Indian photography specialists and produced in partnership with the Alkazi Foundation for the Arts (New Delhi) and the Museum of Art & Photography (Bangalore).

Image: [Philippe Chancel](#)

Similar content

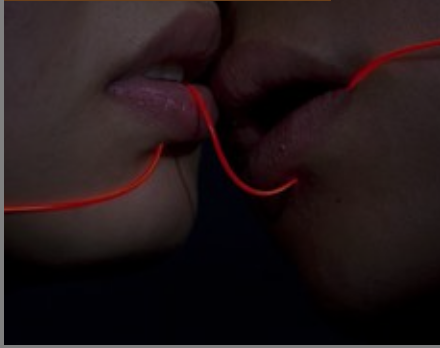
POSTED ON
06 DEC 2023

China | Jimei x Arles
International Photo
Festival 2023



POSTED ON
21 DEC 2017

Jimei x Arles
International Photo
Festival in Xiamen



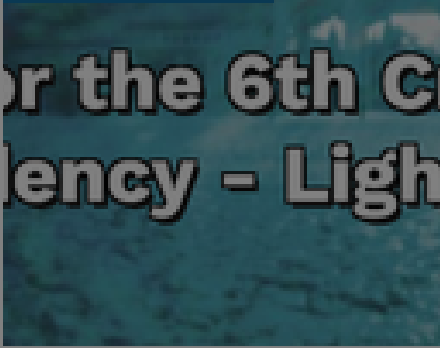
POSTED ON
14 JAN 2016

Les Rencontres d'Arles
in China | Jimei X Arles



POSTED ON
03 JUL 2019

China | Crystal Ruth
Bell Residency call -
Light and Sight



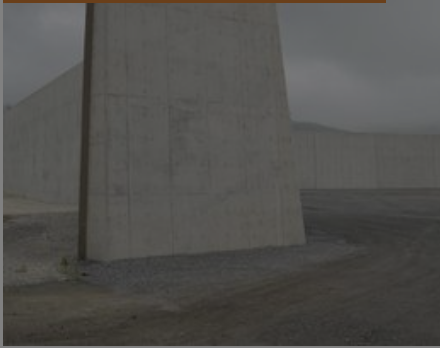
POSTED ON
17 FEB 2023

Serendipity Arles
grant 2023-24 for
South Asian artists



POSTED ON
18 OCT 2018

Tokyographie
international
photography program



ABOUT ASEF CULTURE360

culture360.asef.org brings Asia and Europe closer by providing information, facilitating dialogue and stimulating reflection on the arts and culture of the two regions.

[MORE ABOUT ASEF CULTURE360](#) | [FAQ](#)

