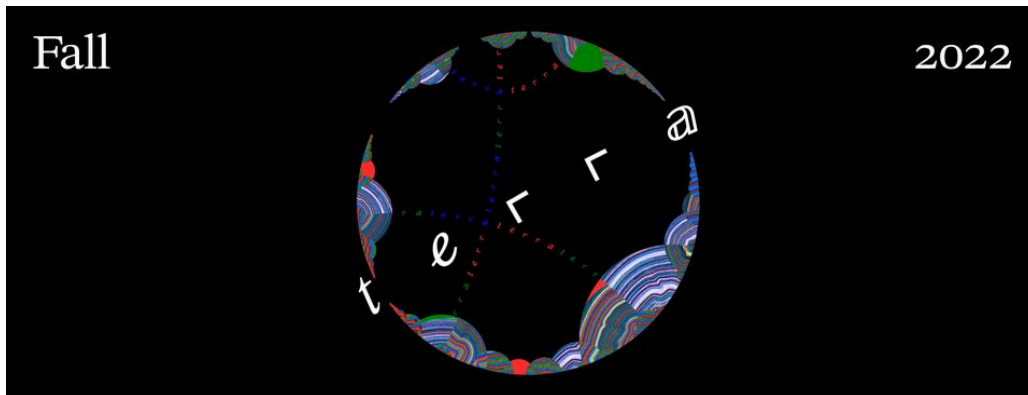


## NEWS & EVENTS > Challenges facing biennales in 2022

POSTED ON  
17 JAN 2022

# Challenges facing biennales in 2022



On CoBo Social contemporary art platform, writer Reena Devi considers the challenges facing art biennales in the year ahead and beyond. With a jam-packed art calendar, the ongoing pandemic, leadership issues, accelerating technology and a lack of in-depth engagement, she asks: does this century-old platform have a future?

Due to the onset of COVID-19 and a series of inevitable postponements, 2022 is going to be a rare landmark year for the art world, with a slew of biennales and major international art shows set to take place.

During the first pandemic year, La Biennale di Venezia pushed its 59th edition back one year to 2022, coinciding with documenta, held every five years in Kassel, Germany, and slated to open in 2022, as well as the Berlin Biennale. Meanwhile, Biennale d'art contemporain de Lyon in France, which was originally scheduled for 2021, will take place in the fall of 2022. Beyond Europe, the Kochi-Muziris Biennale in Kerala was **postponed** twice to December 2022, set to run till April 2023. The Bangkok Art Biennale, which went ahead in 2020 with a slightly scaled

back version, will return in 2022. The Asian Art Biennial launched in October last year and will run till March 2022. (These are only some of the major international art shows happening this year—for a comprehensive list, click [here](#).)

Yet the upcoming crush of events and its ensuing biennale fatigue are not the biggest challenges facing major international art shows. A larger, more exigent question looms: can biennales still resonate with audiences in the art world and beyond, people who have been transformed by ongoing collective catastrophe and accelerated technological disruptions?

The fact is some of the cracks in the century old platform were already showing before the current global health crisis. Back in 2018, the 12th edition of one of Asia's longest-running and most respected biennials, Gwangju Biennale came across as “**overloaded**”. The exhibition fell into the same **trap** as other ambitious mega-exhibitions of its time, featuring way too many artists in a bid to appear inclusive, diverse, and not leave anything out. In doing so, most of these sprawling shows wind up missing the mark when it comes to deeper engagement, which tends to be a strong indicator of a truly inclusive art show.

Fast forward to present day ....

**Read the full article** by Reena Devi on CoBo Social ....

*Image: **Lisbon Architecture Triennale** 2022 **TERRA** takes place 29 September - 5 December 2022*

---

## SIMILAR CONTENT

POSTED ON  
01 FEB 2022



POSTED ON  
12 MAR 2020

ART Power HK launches online activation of art events ■

# ART Power

#ARTpowerHK #HKart2020

NEWS  
CHINA INTERNATIONAL

FROM - TO  
01 JUL 2018 - 30 SEP 2018

Bangkok Biennial 2018



EVENTS  
INTERNATIONAL THAILAND

POSTED ON  
29 APR 2022

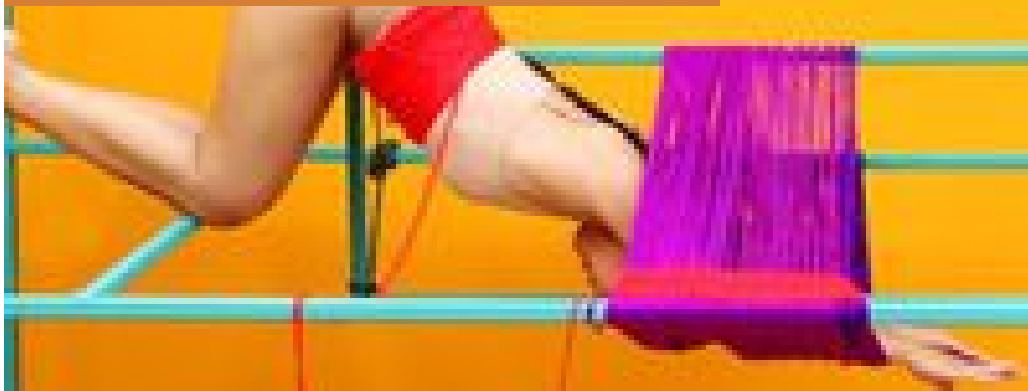
## COVID-19 outbreak delays Design Shanghai



**NEWS**  
ASIA CHINA

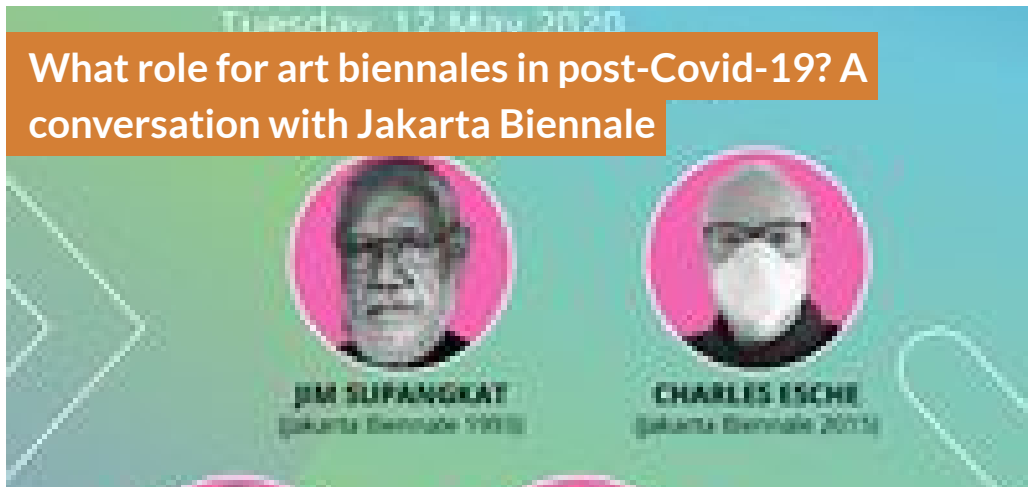
POSTED ON  
05 AUG 2020

## 2020-2021 Biennale calendar updated



**NEWS**  
FRANCE GERMANY INTERNATIONAL IRELAND JAPAN THAILAND

FROM - TO  
12 MAY 2020 - 12 MAY 2020



EVENTS  
COUNTRY  
INDONESIA  
INTERNATIONAL

#### THEMES

COVID-19 CREATIVE INDUSTRIES

#### DISCIPLINES

DESIGN FESTIVALS VISUAL ARTS

### ABOUT ASEF CULTURE360

[culture360.asef.org](http://culture360.asef.org) brings Asia and Europe closer by providing information, facilitating dialogue and stimulating reflection on the arts and culture of the two regions.

**MORE ABOUT ASEF CULTURE360 | [FAQ](#) | [f](#) [X](#) [@](#)**

This website was created and maintained with the financial support of the European Union. Its contents are the sole responsibility of the Asia-Europe Foundation (ASEF) and do not necessarily reflect the views of the European Union.



About us  
Team  
Partners  
FAQ  
Brand guidelines  
How to partner with us  
Contact us

#ASEFCulture

ASIA-EUROPE FOUNDATION (ASEF) 2017 | [TERMS OF SERVICE & PRIVACY POLICY](#) | [CREATIVE COMMONS ATTRIBUTION - NON COMMERCIAL SHARE](#)