

Privacy Settings

We use cookies to optimize our website and our service.

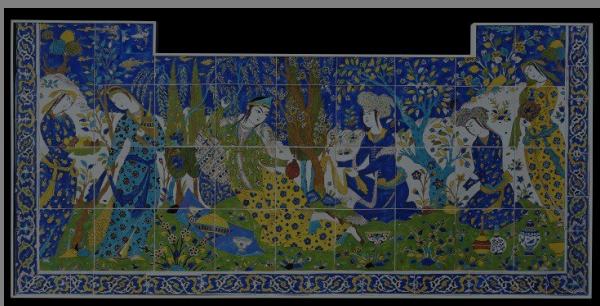
- ☒ Functional
- ☒ Statistics
- ☒ Marketing

Save

Functional only

Accept all

Worldwide"



A conference entitled **"From Malacca to Manchester:**

Curating Islamic Collections Worldwide" will be held at Manchester Museum, United Kingdom, on **23-24 February 2017**. The conference is part of a wider project to catalogue and research collections of Islamic art and material culture across the Manchester Museums and Galleries Partnership (MMGP), and is supported by the John Ellerman Foundation. A **call for paper proposals** has recently been launched. The conference will **explore and appraise current and developing practices in the curating of museum collections of Islamic art and material culture around the world**, in Europe and in the UK. A keynote address by Dr Stefan Weber, Director of the Museum of Islamic Art in Berlin, will be complemented by a series of presentations, panel discussions, practical workshops, and visits to collections in Manchester including the Whitworth Art Gallery, Manchester Museum, The John Rylands Library (Special Collections), and Manchester Art Gallery. The conference's **aim is to offer a vibrant and challenging perspective on the field, review ongoing projects and public and scholarly engagement**, and explore professionals' aspirations for the future developments of collections of Islamic art and material culture. **Original proposals are welcome from museum professionals, rising and established academic scholars, and graduate students**. Submissions are invited on topics including, but not limited to:

- Recent and continuing developments in the organisation and display of museum collections of Islamic art and material culture.
- The conceptual understanding of these collections (both 'Islamic' and 'art' as concepts).
- The representation of faith in the museum.
- Presenting cultural complexity engagingly.
- Islam in Europe: in the museum.

- How museum education and volunteer programmes are engaging with this field.
- Outreach and education involving both Muslim and non-Muslim groups.
- Particular challenges faced by non-specialists working with these collections.
- Addressing the longstanding scholarly exclusion of certain regions from the traditional consideration of 'Islamic world' (i.e. parts of South and South-East Asia).
- Migration of artistic techniques and transregional interconnection between cultures.
- Approaches to the museum presentation of Islamic artistic traditions alongside those of non-Islamic cultures which are related temporally, geographically, or stylistically.

Proposals are welcome for 20-minute paper presentations, with an additional 10 minutes for questions, as well as for panels of up to four speakers. They should be sent **by 25 September**. For **additional information** about the international conference "From Malacca to Manchester: Curating Islamic Collections Worldwide" and the related call for papers, please visit

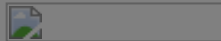
<http://documents.manchester.ac.uk/DocuInfo.aspx?DocID=29376>

Image above: from the **Facebook group** "Islamic Art and Material Culture Subject Specialist Network"

SIMILAR CONTENT

BY **JORDI BALTÀ PORTOLÉS**
07 NOV 2016

The Inclusive Museum Conference 2017: Call for Papers



BY **JORDI BALTÀ PORTOLÉS**
08 OCT 2017

Museums of Asian Arts outside Asia: Call for Papers



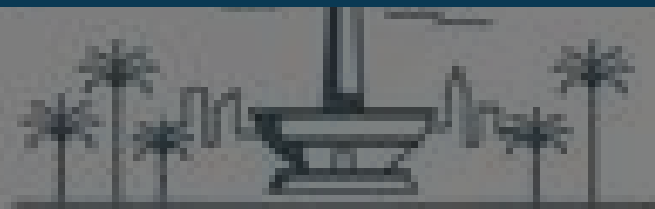
FROM - TO
26 JAN 2012 - 15 APR 2012

Hajj: Journey to the Heart of Islam



DEADLINE
15 SEP 2023

Indonesia | Association of Southeast Asian Studies Annual Conference 2023



ASEAS

Asian Studies

OPEN CALLS

BRUNEI DARUSSALAM CAMBODIA INDONESIA INTERNATIONAL LAO PDR MALAYSIA MYANMAR PHILIPPINES
SINGAPORE THAILAND UNITED KINGDOM VIET NAM

DEADLINE
31 JAN 2011

Connected Communities Digital Resources conference | CALL

OPEN CALLS

CHINA UNITED KINGDOM

BY JORDI BALTÀ PORTOLÉS
02 JUN 2018 - 02 JUN 2018

Panel: "Museums of Asian Arts outside Asia" | United Kingdom



COUNTRIES

ASIA EUROPE UNITED KINGDOM

THEMES

EVENTS
MUSEUMS
ASIA UNITED KINGDOM

ABOUT ASEF CULTURE360

culture360.asef.org brings Asia and Europe closer by providing information, facilitating dialogue and stimulating reflection on the arts and culture of the two regions.

This website was created and maintained with the financial support of the European Union. Its contents are the sole responsibility of the Asia-Europe Foundation (ASEF) and do not necessarily reflect the views of the European Union.



[About us](#)

[Team](#)

[Partners](#)

[FAQ](#)

[Brand guidelines](#)

[How to partner with us](#)

[Contact us](#)

[#ASEFCulture](#)