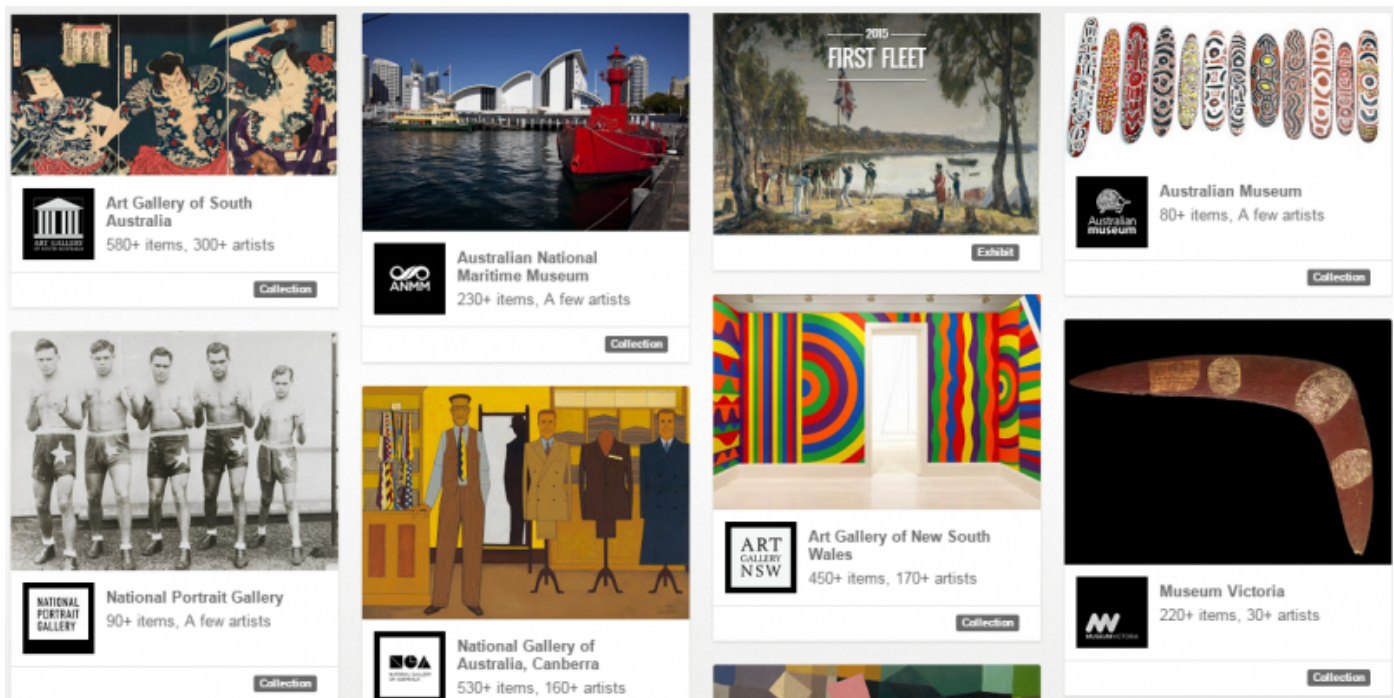


NEWS & EVENTS > Australian cultural institutions join world's largest museum

POSTED ON
15 APR 2015

Australian cultural institutions join world's largest museum



 australia-google

Fourteen major Australian cultural institutions **have joined** the world's biggest online museum: the **Google Cultural Institute**, a collection of artworks and artefacts that currently includes works from 673 international museums, including the British Museum, the Hermitage in St Petersburg and the Palace of Versailles.

The move brings much of Australia's visual arts cultural product onto the international stage, providing searchability, high resolution images and, in some cases, virtual tours of exhibition spaces.

More than 2000 digitised Australian cultural items join the **Google Cultural Institute** collection, among them Aboriginal bark paintings, military hardware, portraits of important Australians and contemporary sculpture.

New 360-degree panoramic imagery, captured using Google’s Street View technology, will allow online virtual tours of selected sites and experiences. International viewers will be able to follow a camera walking from Bondi to Tamarama during Sculpture by the Sea and to see inside ‘G for George’, the Lancaster Bomber at the War Memorial.

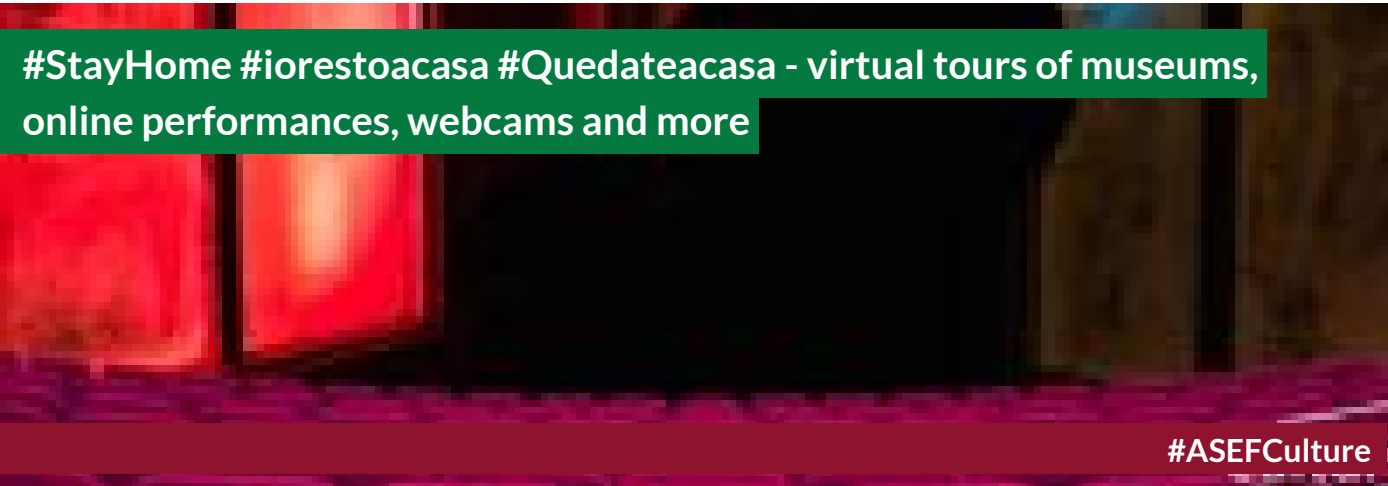
SIMILAR CONTENT

POSTED ON
17 MAY 2013

Google Art Project and the Asia-Europe Museum Network



BY JUDITH STAINES
15 APR 2020



FEATURES
ASIA EUROPE

POSTED ON

06 JUN 2013

Virtual Collection of Asian Masterpieces launches new website



BY **JORDI BALTÀ PORTOLÉS**
10 DEC 2018 - 11 DEC 2018

Global Webinar on Museum Soft Power



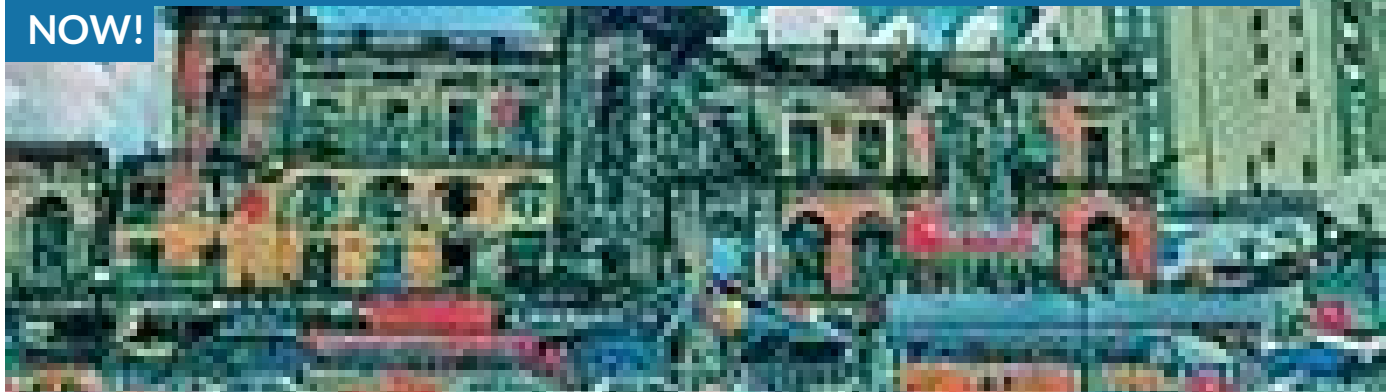
FROM - TO
07 DEC 2017 - 08 DEC 2017

REMIX Sydney Summit

CULTURE TECHNOLOGY

DEADLINE
31 JAN 2021

Global Hackathon 2021 on immersive participatory experiences - apply
NOW!



OPEN CALLS

BANGLADESH INDIA PAKISTAN UNITED KINGDOM

COUNTRIES

AUSTRALIA INTERNATIONAL

THEMES

CREATIVE INDUSTRIES MUSEUMS

DISCIPLINE

NEW MEDIA

ABOUT ASEF CULTURE360

culture360.asef.org brings Asia and Europe closer by providing information, facilitating dialogue and stimulating reflection on the arts and culture of the two regions.

MORE ABOUT ASEF CULTURE360 | [FAQ](#) | [f](#) [X](#) [@](#)

This website was created and maintained with the financial support of the European Union. Its contents are the sole responsibility of the Asia-Europe Foundation (ASEF) and do not necessarily reflect the views of the European Union.



About us
Team

Partners

FAQ

Brand guidelines

How to partner with us

Contact us

#ASEFCulture

ASIA-EUROPE FOUNDATION (ASEF) 2017 | [TERMS OF SERVICE & PRIVACY POLICY](#) | [CREATIVE COMMONS ATTRIBUTION - NON COMMERCIAL SHARE](#)