

## Privacy Settings

We use cookies to optimize our website and our service.

- ☒ Functional
- ☒ Statistics
- ☒ Marketing

Save

Functional only

Accept all

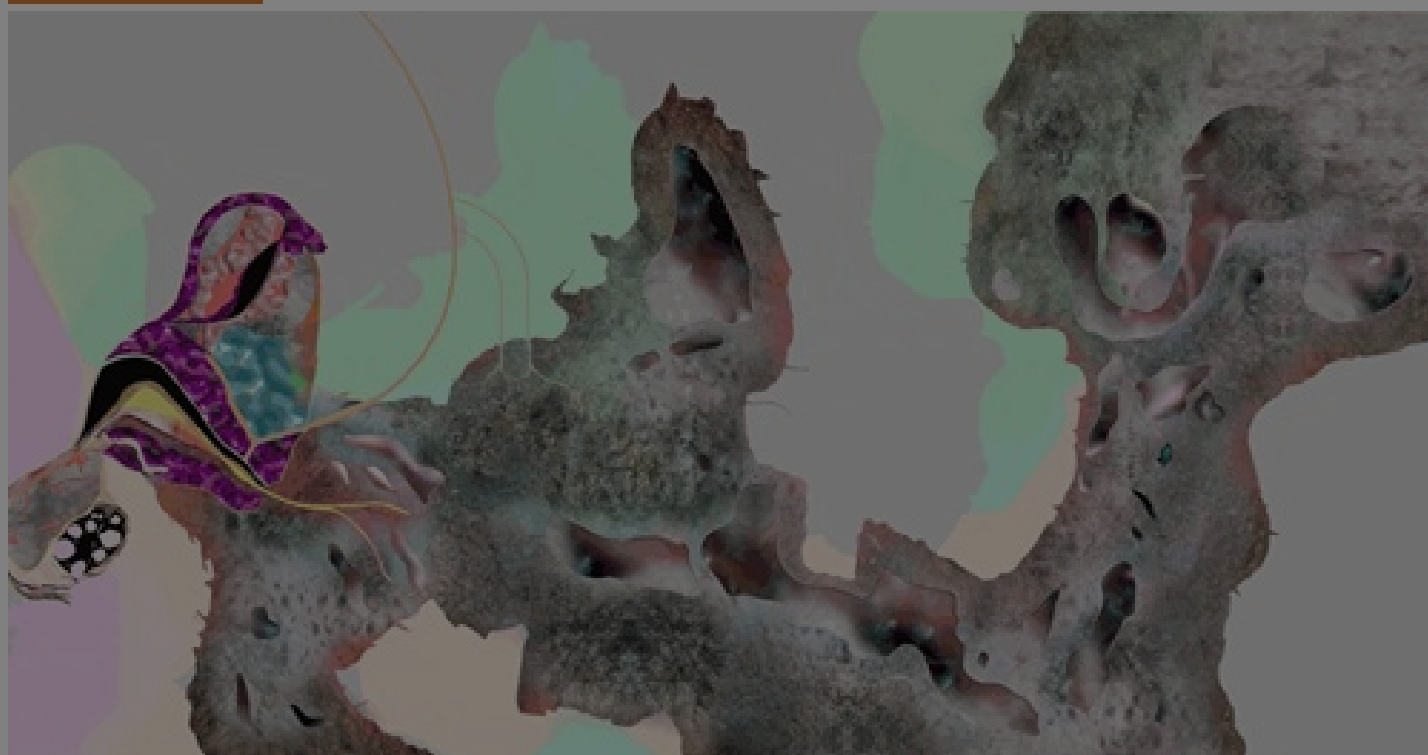
WEBSITE  
[HTTPS://WWW.POWERSTATIONOFART.COM](https://www.powerstationofart.com)

COUNTRIES  
[CHINA](#) [INTERNATIONAL](#)

THEME  
[ART AND ENVIRONMENT](#)

DISCIPLINE  
[VISUAL ARTS](#)

## Water



The 13th Shanghai Biennale, titled: *Bodies of Water* runs November 10, 2020–June 27, 2021 at **Power Station of Art**. The programme unfolds over eight months in an extended crescendo format, culminating with an exhibition opening in April 2021.

The 13th Shanghai Biennale, *Bodies of Water* starts its in crescendo program convening artists, activists, scientists, thinkers, and citizens at large to sense, discuss, and reconstruct wet-togetherness.

The Power Station of Art (PSA) is delighted to announce the opening of the **13th Shanghai Biennale, *Bodies of Water***. For the first time, the biennale will unfold as an in crescendo project, launching November 10, with a five-day program titled PHASE 01: A WET-RUN REHEARSAL.

Challenging the usual art biennale format, it will be the first stage of an eight-month extended program that will allow the artists, thinkers and curators contributing to the Biennale to develop their work in close collaboration with the City of Shanghai, its people, networks of activism, organizations, and institutions. *Bodies of Water* will culminate with the opening of PHASE 03: AN EXHIBITION on April 10, 2021.

The Biennale's Chief Curator, architect and writer **Andrés Jaque**, and its curatorial team composed of **You Mi**, **Marina Otero Verzier**, **Lucia Pietroiusti**, and **Filipa Ramos**, are collaborating with the School of Philosophy of Fudan University, the Shanghai Institute of Visual Arts, and the multimedia network DOCU TV to run the five-day performed assembly, where lectures, debates, screenings, and workshops will turn the Power Station of Art into a space for bodily experimentation.

Among other participants, artists **Itziar Ocariz**, **Himali Singh Soin**, **Tong Wenmin** and **Clare Britton**; thinkers **Astrida Neimanis**, **Sun Xiangchen**, **Zhao Tingyang**, **Weng Zijian**, **Wang Hongbo**, **Hou Hongyu**, and **Mark Wislawski**, and filmmakers the **Korzhikina Film Collective**, **Yong**

Hongzhe, Hou Hanru, and Mark Wigley, and filmmakers the Karmadig Film Collective, Tong Xiang Li, Tuan Andrew Nguyen, Pema Tseden, and Jenna Sutela will advocate for the Biennale’s engagement in processes of planetary reconnection relying on transspecies collectivity. This includes thinking beyond human-centered and nation-based narratives and connecting the discussions of bodies with those of the environment.

The Biennale is engaging with the history and geography of Shanghai, a long-standing arena for liquid territorial bodies, and the site for the Biennale. The city is intimately connected to the 5,000-meter descent to the East China Sea of Qinghai-Tibet Plateau’s meltwaters, located at the intersection of the Huangpu and the Yangtze Rivers, and in the vicinity of the human-made Jing-Hang Grand Canal.

Particles dragged from up to 6,300 kilometers of sediment are metabolized by edible plants at the Yangtze Delta, China’s most fertile agricultural site. Mineral and organic matter, travelling suspended as part of bodies of water, is then rebodied. Not without struggle, the flow of water reconstructs geographies and vitalizes organisms.

The Shanghai Biennale, the oldest art biennale in China, will ultimately interrogate its own situation at PSA, a former coal-electric plant that fueled the industrialization of the Huangpu River, a cauldron of accelerated production and bodily mobilization.

This edition will nurture art as an ecosystem of practices closely connected to different forms of human and non-human knowledge, sense, and intelligence. In close collaboration with Shanghai’s universities and networks of independent art spaces and activism, the Biennale will build on art’s interdependency with science, social constructs, technology, and modes of spirituality. Rather than presenting art as autonomous, the biennale will provide a platform to acknowledge the diversity in which research and knowledge-making happens and is disseminated.

### The Phases: In Crescendo Biennale

For the first time, the Shanghai Biennale will operate as an eight-month “in crescendo” project, unfolding in three phases:

PHASE 01: A WET-RUN REHEARSAL. November 10–14, 2020. A summit bringing together contributors to present their work in the form of a performative assembly taking place in the PSA’s Grand Hall and spreading out to networks of art spaces along the Yangtze River.

PHASE 02: AN ECOSYSTEM OF ALLIANCES. November 15, 2020 – April 9, 2021. Keeping a permanent post at the PSA, the “in crescendo” project associates itself with infra-structures where online/offline social and communal life are taking place. These include streaming TV channels, social media, university programs, and serial interventions on urban dynamics.

PHASE 03: AN EXHIBITION. April 10–June 27, 2021. Opening with a festival, the Biennale will unfold into an exhibition that will run through PSA and expand into a series of locations along the Huangpu River and across the city of Shanghai.

Further information can be found in the full [press release](#).

[Information from e-flux](#)

## Similar content

POSTED ON  
14 JUN 2021

2021 Shanghai  
International Paper Art  
Biennale - call for  
works

POSTED ON  
25 MAY 2015

1st Changjiang  
International Photo &  
Video Biennale

POSTED ON  
25 AUG 2016

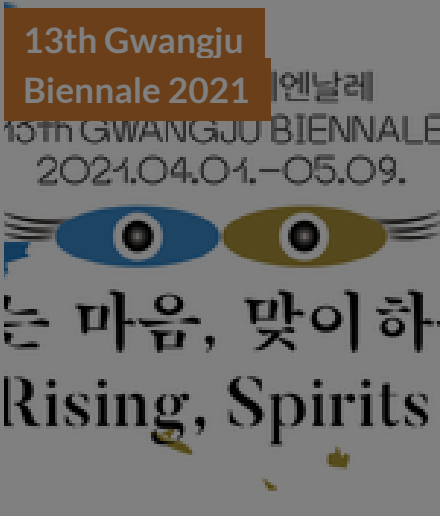
Shanghai Project |  
Envision 2116



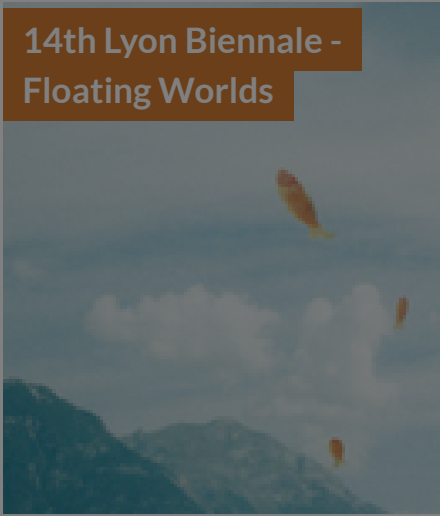
POSTED ON  
16 NOV 2014



POSTED ON  
09 APR 2021



POSTED ON  
20 SEP 2017



## ABOUT ASEF CULTURE360

[culture360.asef.org](http://culture360.asef.org) brings Asia and Europe closer by providing information, facilitating dialogue and stimulating reflection on the arts and culture of the two regions.

[MORE ABOUT ASEF CULTURE360](#) | [FAQ](#)

