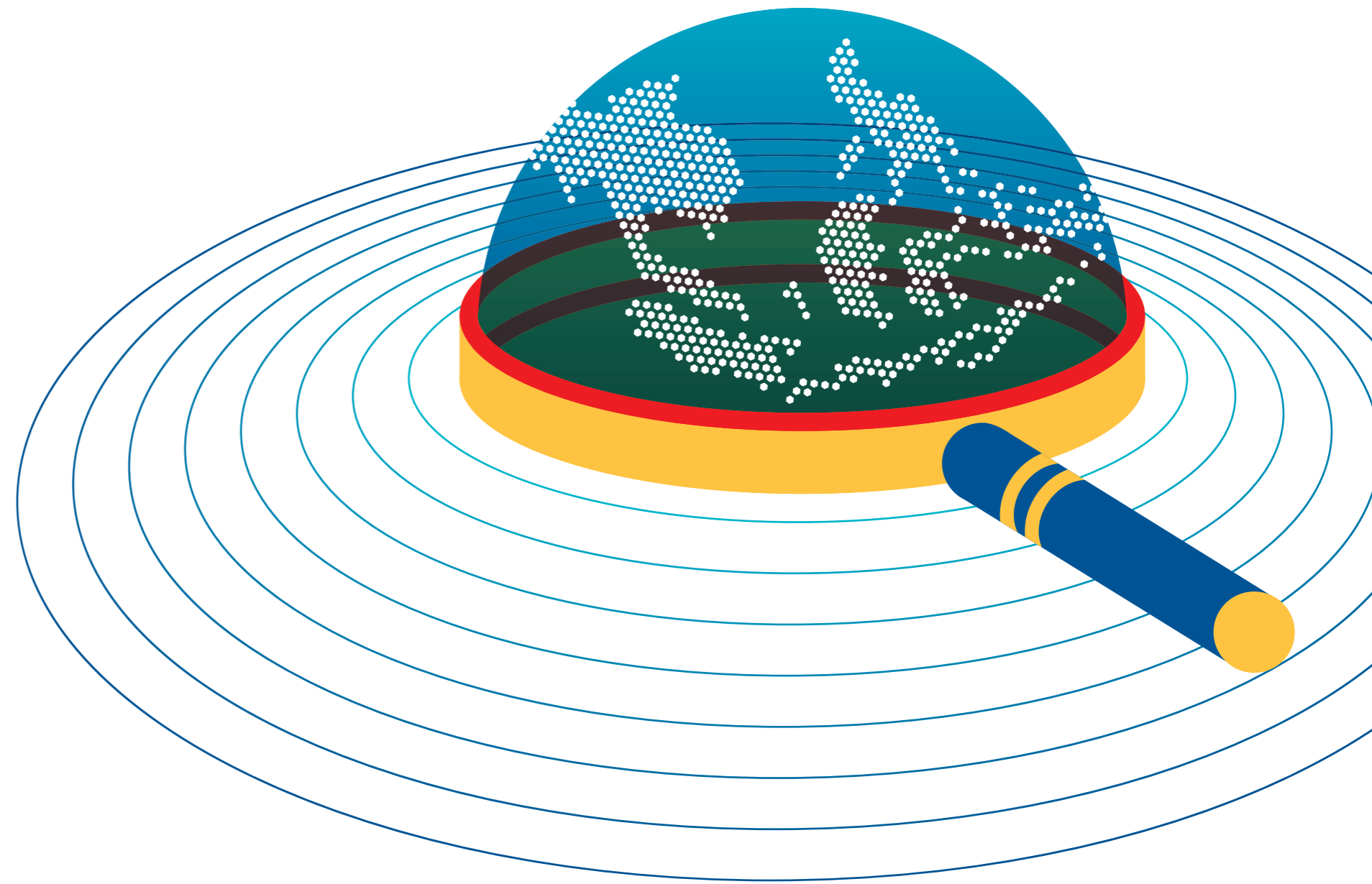


# Mobility Funding Guides

ASEAN Region  
2016-2017 Edition

---



ASEF culture360

[www.culture360.asef.org](http://www.culture360.asef.org)

An initiative of:



ASEF culture360  
[www.culture360.asef.org](http://www.culture360.asef.org)

on the move

# Mobility Funding Guides

---

Funding Opportunities  
for International Cultural Exchange in Asia

2016-2017 Edition

GUIDE to the  
**Philippines**

DOWNLOAD AT  
[www.culture360.asef.org/  
asef-news/mobility](http://www.culture360.asef.org/asef-news/mobility)

An initiative of



ASEF culture360

[www.culture360.asef.org](http://www.culture360.asef.org)

on the **move**

# Mobility Funding Guides - ASEAN Region 2016-2017 Edition

## Published by:

Asia-Europe Foundation (ASEF)  
31 Heng Mui Keng Terrace  
Singapore 119595  
Tel: +65 6874 9700  
Fax: +65 6872 1135  
[www.ASEF.org](http://www.ASEF.org)

## Team at Asia-Europe Foundation (ASEF)

Ms Andrea ABELLON, Ms Valentina RICCARDI, Ms Anupama SEKHAR

## Researcher

Ms Marie LE SOURD (On The Move)

ISBN: 978-981-11-2711-3

Download from [culture360.asef.org](http://culture360.asef.org) at [culture360.asef.org/asef-news/mobility](http://culture360.asef.org/asef-news/mobility)

All rights reserved © Asia-Europe Foundation (ASEF), December 2016

Special thanks to the organisations and individuals who participated in the research survey and provided relevant information for the first and second edition of this publication, as well as to the following organisations:

### Arts Network Asia (ANA)

Mr TAY Tong

### Korea Arts Management Service (KAMS)

Ms Hyunjoo LEE, Mr BJ YOO, Mr Jooyoung KOH

### India Foundation for the Arts (IFA)

Mr Anmol VELLANI, Ms Arundhati GHOSH

### Tokyo Performing Arts Market (TPAM)

Ms Hiromi MARUOKA

### Japan Center, Pacific Basin Arts Communication (PARC)

Ms Noriko OHARA, Ms Yui MORIMOTO



The Asia-Europe Foundation (ASEF) promotes understanding, strengthens relationships and facilitates cooperation among the people, institutions and organisations of Asia and Europe. ASEF enhances dialogue, enables exchanges and encourages collaboration across the thematic areas of culture, economy, education, governance, public health and sustainable development. ASEF is an intergovernmental not-for-profit organisation located in Singapore. Founded in 1997, it is the only institution of the Asia-Europe Meeting (ASEM). Together with about 750 partner organisations ASEF has run more than 700 projects, mainly conferences, seminars and workshops. Over 20,000 Asians and Europeans have actively participated in its activities and it has reached much wider audiences through its networks, web-portals, publications, exhibitions and lectures. [www.ASEF.org](http://www.ASEF.org)



[culture360.asef.org](http://culture360.asef.org) is a portal initiated by the Asia-Europe Meeting (ASEM) and managed by the Culture Department at the Asia-Europe Foundation (ASEF). [culture360.asef.org](http://culture360.asef.org) aims to stimulate the cultural engagement between Asia and Europe and enhance greater understanding between the two regions. Created for and fuelled by artists, cultural practitioners and policy makers, [culture360.asef.org](http://culture360.asef.org) is your platform to inform, exchange ideas, interact and collaborate with the arts and cultural communities across Asia and Europe. As a reference tool, and a place for dialogue, this exciting portal will take cultural cooperation between Asia and Europe to a whole new level. [www.culture360.asef.org](http://www.culture360.asef.org)

The views expressed in this publication do not in any way reflect, in part or in whole, the official opinion or position of ASEF, ASEF's partner organisations, or its sponsors. This publication has been produced with financial assistance of the European Union. The contents of this publication are the sole responsibility of ASEF and do not reflect the position of the European Union.

# PHILIPPINES

## MAPPING OF FUNDING OPPORTUNITIES FOR INTERNATIONAL CULTURAL EXCHANGE IN ASIA

### MOBILITY FUNDING GUIDE

#### 2016-2017 EDITION

This *Mobility Funding Guide* is a concrete output of the mapping of funding opportunities for international exchange in 20 countries in Asia. It was first released on [culture360.asef.org](http://culture360.asef.org) in September 2012 by the Asia-Europe Foundation (ASEF) with the cooperation of Arts Network Asia (ANA), Korea Arts Management Service (KAMS), Japan Center, Pacific Basin Arts Communication (PARC), and Tokyo Performing Arts Market (TPAM).

The main objectives of this Guide are to make available online the existing information on funding that supports the international mobility of artists and cultural operators from the Philippines and to provide input to funders on how to fill in the existing funding gaps for international cultural exchange in Asia and in the Philippines in particular.

The Guide follows the existing model of the *Guide to funding opportunities for the international mobility of artists and culture professionals in Europe*<sup>i</sup>, first produced by the Foundation Interarts, On the Move and PRACTICS.

In this **2016-2017 Edition**, you will find funding opportunities for the Philippines in most artistic and cultural disciplines at national, regional and international levels.

This Guide focuses on the Philippines, in the framework of the 20 Asian countries of the Asia-Europe Meeting (ASEM)<sup>ii</sup> on Asia (ASEM Asian partner countries including the Philippines) and is organised around different themes, including culture and development. Other nationals who do not have a dedicated country guide may be interested to check this Guide for additional sources of funding.

Only regular opportunities accessible online are listed. The mention of Public, Private and Public/Private have been added next to the funding schemes to highlight the source(s) of the said funding. Not included are: funds for which information is only available offline, funds that are not based on open calls, and ad hoc or short-term funding.

For a full overview of the methodology and scope of the research, please refer to the Cultural Mobility Funding Guide's *General Introduction*<sup>iii</sup>.

This Guide is an attempt to gather all the resources in one document and is by no means complete. As we aim to update it on a regular basis through further research and input from the field, your feedback is crucial.

You can send your feedback to: [funding@culture360.org](mailto:funding@culture360.org)

If you would like to know more about this initiative or collaborate with us please contact:  
Ms Valentina RICCARDI at [valentina.riccardi@asef.org](mailto:valentina.riccardi@asef.org)

For regular and one-off calls for projects, collaborations and other opportunities to fund international cultural exchange, we invite you to subscribe to the [culture360.asef.org](http://culture360.asef.org) and/or the On the Move's newsletter (<http://on-the-move.org>).

*Last update: by On the Move, the cultural mobility information network, <http://on-the-move.org>, October 2016*

You are welcome to share this publication on your website or blog. When you share we would appreciate if you could mention the following:

*"The Mobility Funding Guides were initiated by the Asia-Europe Foundation (ASEF) through its online portal <http://culture360.asef.org/> in partnership with On the Move".*

# NATIONAL AND INTERNATIONAL SOURCES OF FUNDING FOR THE PHILIPPINES

<b><u>NATIONAL SOURCES OF FUNDING</u></b>		<b>Page</b>
<b>1. GOVERNMENT FUNDING</b>		<b>3</b>
1.1	National Commission for Culture and the Arts <i>Travel (airfare) assistance and Philippine Artist Residency Programme</i>	
<b>2. PRIVATE ORGANISATIONS' AWARDS</b>		<b>4</b>
2.1	Ateneo Art Gallery <i>Ateneo Art Awards</i>	
<b><u>INTERNATIONAL SOURCES OF FUNDING</u></b>		<b>4</b>

## **FUNDING AT A GLANCE:**

Funding organisations: 2

Funding schemes: 3

Additional sources of funding (focused on Asia): 37

## **ADDITIONAL RESOURCES:**

Film Development Council of the Philippines: <http://www.fdcph.ph/>

EUNIC Philippines: <http://philippines.eunic-online.eu/>

Planting Rice (visual arts): <http://www.plantingrice.com/>

*The views expressed in this publication do not reflect, in part or in whole, the official opinion or position of ASEF, ASEF's partner organisations, or its sponsors.*

*This publication has been produced with financial assistance of the European Union.*

*The contents of this publication are the sole responsibility of ASEF and do not reflect the position of the European Union*

# NATIONAL SOURCES OF FUNDING

## 1. Governmental Funding

### 1.1. National Commission for Culture and the Arts

*Travel (airfare) assistance*

**Description:** This programme provides financial support for Filipino artists performing or exhibiting their works abroad, as well as those participating in prestigious conferences, festivals and competitions. (Public)

**Type of mobility:** Travel grants

**Sectors:** All (projects have to be in line with the three above mentioned goals)

**Eligibility criteria:**

Nationality: Filipino

Profession: Individuals and groups

Destination: International

Other: Documents to be provided: letter of invitation from organizers; details of work to be done or performed; background of the event and curriculum vitae (CV)

Grant coverage: Airfare for individuals: Within Asia - PHP 30,000; outside Asia - PHP 50,000

Airfare for groups: Within Asia - PHP 150,000; outside Asia - PHP 300,000 (maximum/depends on the size of the group)

Last viewed: 6 October 2016

URL: <http://ncca.gov.ph/about-ncca-3/grants-program/> (scroll down)

*Philippine Artist Residency Programme*

**Description:** The Philippine Artist Residency program (PARP) provides selected Filipino and French artists the opportunity for Filipino artists to live in France and French artists to live in the Philippines for a period of two to three months while developing their proposed artistic project. The program is a collaborative effort between Alliance Française of Manila, Centre Intermondes and 1335Mabini Gallery. (Public/Private)

**Type of mobility:** Artists' residency

**Sectors:** Visual arts

**Eligibility criteria:**

Age: Below 45

Nationality: Filipino

Profession: Individuals and groups

Destination: France

Others:

Grant coverage: Travel and living expenses are covered

Last viewed: 6 October 2016

URL: <http://ncca.gov.ph/join-the-2016-philippine-artist-residency-program-parp-2016/>

## 2. Private Organisations' Awards

### 2.1. Ateneo Art Gallery

*Ateneo Art Awards*

**Description:** Established in 2004 in honour of its founding benefactor Fernando Zobel de Ayala (1924-1984), whose support to young Filipino visual artists left an indelible mark on Philippine art history; the Ateneo Art Awards are granted to Filipino visual artists under the age of 36 for outstanding work presented in an exhibition that runs for a year. There is also a new category: art criticism. (Private)

**Type of mobility:** Artists-in-residence (associated to the art awards)

**Sectors:** Painting, sculpture, photography, installation, new media/video, printmaking, performance

**Eligibility criteria:**

Age: Below 36 years old for the artists

Nationality: Filipino

Profession: Visual artists, curators, museum and gallery directors, members of the present and former juries, art educators and art writers

Destination: Philippines and foreign countries

Other Priorities: From among the nominees, 12 exhibits/ artworks are shortlisted and three are declared winners. The artists who created the winning exhibitions/ artworks will be invited to apply for the international residency grants funded by the Ateneo Art Gallery and its partner institutions which are: La Trobe University Visual Arts Centre in Bendigo, Australia, Artesan Gallery in Singapore and Liverpool Hope University in Liverpool, United Kingdom.

Grant coverage: Travel costs are covered

Last viewed: 6 October 2016

URL: <http://ateneoartgallery.org/ateneo-art-awards/>

## INTERNATIONAL SOURCES OF FUNDING

Beyond the above mentioned national sources of funding, please find below targeted regional and international sources of funding - both public and private.

Funding organisations and schemes underlined are relevant for the Philippines (on a regular basis or depending on the country in focus for some schemes).

For more details on the funding organisations and related schemes below, please refer to the Cultural Mobility Funding Guide, 'Focus on Asia': [http://culture360.asef.org/wp-content/download/mobility/Asia\\_MobilityFundingGuide.pdf](http://culture360.asef.org/wp-content/download/mobility/Asia_MobilityFundingGuide.pdf)

### 1. ORGANISATIONS WITH A PARTICULAR FOCUS ON ASIA AND/OR SOUTHEAST ASIA<sup>iv</sup>

Page No. 4

- 1.1 Asian Cultural Council
- 1.2 Fundação Oriente
- 1.3 Arts Network Asia
- 1.4 SEAMEO-SPAFA - Regional Centre for Archaeology and Fine Arts
- 1.5 SEASREP Foundation - *Southeast Asian Studies Exchange Programme*
- 1.6 Fukuoka Asian Art Museum (Japan) - *Curators/Researchers and Artists-in-Residence*
- 1.7 The Japan Foundation – Asia Centre – *Grant programme for promotion of cultural collaboration and Fellowship programme*
- 1.8 International House of Japan and the Japan Foundation - *Asia Leadership Fellow programme*
- 1.9 The Toyota Foundation – *International grant programme*
- 1.10 Korea Foundation for Advanced Studies - *International Scholar Exchange Fellowship*
- 1.11 Busan International Film Festival - *Asian Film Academy and Asian Project Market*
- 1.12 Borak Art Series (Malaysia) – *Pitchpad ASEAN*
- 1.13 Australian-ASEAN Council – *Department for Foreign Affairs and Trade*

## 2. ORGANISATIONS WITH A PARTICULAR FOCUS ON EMERGING AND DEVELOPING COUNTRIES<sup>v</sup> - COVERING SOME ASIAN COUNTRIES

Page No. 11

- 2.1 Goethe-Institut - *Theatre and dance programme – Guest performances in Germany, Guest programme for young foreign theatre people, Guest performance tours in Germany by musicians from developing or transition countries, International co-production fund*
- 2.2 Institute for Foreign Relations, Germany - *RAVE Scholarships<sup>vi</sup> & Artists' Contacts*
- 2.3 Prince Claus Fund for Culture and Development - *Grants and Collaborations, Ticket Fund*
- 2.4 Arts Collaboratory - *Grants*
- 2.5 Network of South-Asia Goethe Institutes and the British Council – *ARThinkSouthAsia*
- 2.6 Swiss Art Council - Pro Helvetia - *Two Residency Schemes*
- 2.7 Artlink, Cultural Cooperation (Supported by the Swiss Agency for Development and Cooperation) – *SüdKulturFonds*
- 2.8 UNESCO-Keizo Obuchi Research Fellowships Programme; International Fund for Cultural Diversity and International Fund for the Promotion of Culture
- 2.9 International Committee for Museums and Collections of Modern Art - *Travel grants programme*
- 2.10 ISPA / International Society for the Performing Arts (USA) - *Global Fellowship programme*
- 2.11 FT/OppenheimerFunds - *Emerging Voices Awards*
- 2.12 The Aga Khan Foundation - *Music initiative*
- 2.13 International Film Festival Rotterdam, (Netherlands) - *Hubert Bals Fund*
- 2.14 Berta Foundation - *International Documentary Film Festival Amsterdam Programme: Development and Production & Post-production Funds*
- 2.15 Berlinale Film Festival: World Cinema Fund (Germany) - *Documentary Film Grants*
- 2.16 Institut Français – *La Fabrique des Cinémas du Monde*
- 2.17 Festival of the Three Continents, Nantes, (France) - *Produire au Sud*
- 2.18 The Films From the South Foundation, (Norway) - *Sorfond*
- 2.19 Visions Sud Est (Switzerland) - *Film production and distribution grants*
- 2.20 Musée du Quai Branly (France) - *Residency*

## 3. ORGANISATIONS WITH A SPECIFIC COUNTRY COVERAGE INCLUDING SOME COUNTRIES IN ASIA

Page No. 24

- 3.1 Organisation Internationale de la Francophonie – *Funding schemes*
- 3.2 The Commonwealth Foundation – *Grants*
- 3.3 EU funded Global Cultural Diplomacy Platform, *Programmes*
- 3.4 Asia-Europe Foundation (ASEF) – *New funding scheme from 2017*
- 3.5 British Council – *Creative Economy*
- 3.6 Ministry of Culture and Tourism, Korea – *Cultural Partnership Initiative*
- 3.7 Harvard University – *South Asia Institute (USA), Programme for Visiting Artists from South Asia*
- 3.8 International Education Institute – *Artist Protection Fund*
- 3.9 The Abraaj Group, *Art Prize*
- 3.10 European Audiovisual Entrepreneurs (EAVE) – *Ties That Bind (Asia-Europe Producers)*
- 3.11 International Film Festival Rotterdam – *The Rotterdam Lab*
- 3.12 U.S. Department of State's Bureau of Educational and Cultural Affairs and the New England Foundation for the Arts – *Centerstage*
- 3.13 U.S. Department of State's Bureau of Educational and Cultural Affairs and the Bang on a Can's Found Sound Nation – *OneBeat*

i. <http://on-the-move.org/funding>

ii. The **Asia-Europe Meeting (ASEM)** is an intergovernmental process established in 1996 to foster dialogue and cooperation between Asia and Europe. ASEM brings together 53 partners (30 European and 21 Asian countries, the European Union, and the ASEAN Secretariat). The 53 ASEM partners are Australia, Austria, Bangladesh, Belgium, Brunei Darussalam, Bulgaria, Cambodia, China, Croatia, Cyprus, the Czech Republic, Denmark, Estonia, Finland, France, Germany, Greece, Hungary, India, Indonesia, Ireland, Italy, Japan, Kazakhstan, Korea, the Lao PDR, Latvia, Lithuania, Luxembourg, Malaysia, Malta, Mongolia, Myanmar, the Netherlands, New Zealand, Norway, Pakistan, the Philippines, Poland, Portugal, Romania, the Russian Federation, Singapore, Slovakia, Slovenia, Spain, Sweden, Switzerland, Thailand, the United Kingdom, Viet Nam, the European Union, and the ASEAN Secretariat. For more information, please visit [www.ASEMinfoboard.org](http://www.ASEMinfoboard.org)

iii. <http://culture360.asef.org/wp-content/download/mobility/How-to-read-the-mobility-funding-guides.pdf> .

iv. Knowing that the **notion of "Asia"** does not always encompass the same number of countries and depends on each organisation's scope, for each scheme we have tried as much as possible to **list only the Asian ASEM partner countries for which applications are open**.

v. The notion of "emerging" and "developing" countries does not always refer to the same countries for the identified funding organisations. We have tried as much as possible to list the eligible countries from the Asian ASEM partner countries under the various denominations.

vi. With the support of the Alexander Rave Foundation.