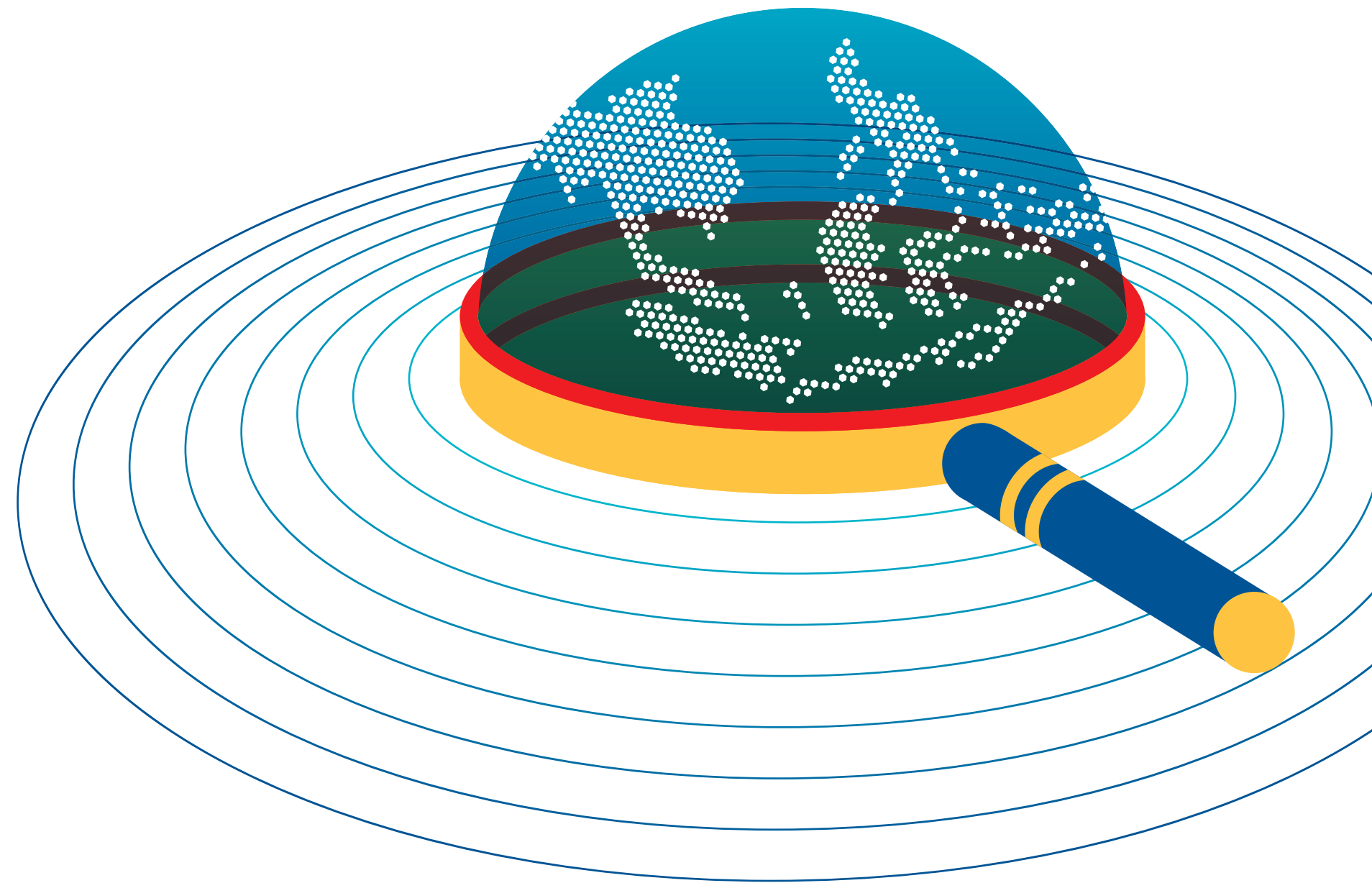


Mobility Funding Guides

ASEAN Region
2016-2017 Edition



ASEF culture360

www.culture360.asef.org

An initiative of:



ASEF culture360
www.culture360.asef.org

on the move

Mobility Funding Guides

Funding Opportunities
for International Cultural Exchange in Asia

2016-2017 Edition

GUIDE to
Indonesia

DOWNLOAD AT
[www.culture360.asef.org/
asef-news/mobility](http://www.culture360.asef.org/asef-news/mobility)

An initiative of



ASEF culture360

www.culture360.asef.org

on the **move**

Mobility Funding Guides - ASEAN Region 2016-2017 Edition

Published by:

Asia-Europe Foundation (ASEF)
31 Heng Mui Keng Terrace
Singapore 119595
Tel: +65 6874 9700
Fax: +65 6872 1135
www.ASEF.org

Team at Asia-Europe Foundation (ASEF)

Ms Andrea ABELLON, Ms Valentina RICCARDI, Ms Anupama SEKHAR

Researcher

Ms Marie LE SOURD (On The Move)

ISBN: 978-981-11-2711-3

Download from culture360.asef.org at culture360.asef.org/asef-news/mobility

All rights reserved © Asia-Europe Foundation (ASEF), December 2016

Special thanks to the organisations and individuals who participated in the research survey and provided relevant information for the first and second edition of this publication, as well as to the following organisations:

Arts Network Asia (ANA)

Mr TAY Tong

Korea Arts Management Service (KAMS)

Ms Hyunjoo LEE, Mr BJ YOO, Mr Jooyoung KOH

India Foundation for the Arts (IFA)

Mr Anmol VELLANI, Ms Arundhati GHOSH

Tokyo Performing Arts Market (TPAM)

Ms Hiromi MARUOKA

Japan Center, Pacific Basin Arts Communication (PARC)

Ms Noriko OHARA, Ms Yui MORIMOTO



The Asia-Europe Foundation (ASEF) promotes understanding, strengthens relationships and facilitates cooperation among the people, institutions and organisations of Asia and Europe. ASEF enhances dialogue, enables exchanges and encourages collaboration across the thematic areas of culture, economy, education, governance, public health and sustainable development. ASEF is an intergovernmental not-for-profit organisation located in Singapore. Founded in 1997, it is the only institution of the Asia-Europe Meeting (ASEM). Together with about 750 partner organisations ASEF has run more than 700 projects, mainly conferences, seminars and workshops. Over 20,000 Asians and Europeans have actively participated in its activities and it has reached much wider audiences through its networks, web-portals, publications, exhibitions and lectures. www.ASEF.org



culture360.asef.org is a portal initiated by the Asia-Europe Meeting (ASEM) and managed by the Culture Department at the Asia-Europe Foundation (ASEF). culture360.asef.org aims to stimulate the cultural engagement between Asia and Europe and enhance greater understanding between the two regions. Created for and fuelled by artists, cultural practitioners and policy makers, culture360.asef.org is your platform to inform, exchange ideas, interact and collaborate with the arts and cultural communities across Asia and Europe. As a reference tool, and a place for dialogue, this exciting portal will take cultural cooperation between Asia and Europe to a whole new level. www.culture360.asef.org

The views expressed in this publication do not in any way reflect, in part or in whole, the official opinion or position of ASEF, ASEF's partner organisations, or its sponsors. This publication has been produced with financial assistance of the European Union. The contents of this publication are the sole responsibility of ASEF and do not reflect the position of the European Union.

INDONESIA

MAPPING OF FUNDING OPPORTUNITIES FOR INTERNATIONAL CULTURAL EXCHANGE IN ASIA

MOBILITY FUNDING GUIDE

2016-2017 EDITION

This *Mobility Funding Guide* is a concrete output of the mapping of funding opportunities for international exchange in 20 countries in Asia. It was first released on culture360.asef.org in September 2012 by the Asia-Europe Foundation (ASEF) with the cooperation of Arts Network Asia (ANA), Korea Arts Management Service (KAMS), Japan Center, Pacific Basin Arts Communication (PARC), and Tokyo Performing Arts Market (TPAM).

The main objectives of this Guide are to make available online the existing information on funding that supports the international mobility of artists and cultural operators from Indonesia and to provide inputs to funders on how to fill in the existing funding gaps for international cultural exchange in Asia and Indonesia in particular.

This Guide follows the existing model of the *Guide to funding opportunities for the international mobility of artists and culture professionals in Europe*ⁱ, first produced by the Foundation Interarts, On the Move and PRACTICS.

In this **2016-2017 Edition**, you will find funding opportunities for Indonesia in most artistic and cultural disciplines at national, regional and international levels. Other nationals who do not have a dedicated country guide may be interested to check this Guide for additional sources of funding - both public and private.

This Guide focuses on Indonesia, in the framework of the 20 Asian countries of the Asia-Europe Meeting (ASEM)ⁱⁱ of Asia (ASEM Asian partner countries including Indonesia) and is organised around different themes, including culture and development.

Only regular opportunities accessible online are listed. The mention of Public, Private and Public/Private have been added next to the funding schemes to highlight the source(s) of the said funding. Not included are: funds for which information is only available offline, funds that are not based on open calls, and ad hoc or short-term funding.

For a full overview of the methodology and scope of the research, please refer to the Cultural Mobility Funding Guide's *General Introduction*ⁱⁱⁱ.

This Guide is an attempt to gather all the resources in one document and is by no means complete. As we aim to update it on a regular basis through further research and input from the field, your feedback is crucial.

You can send your feedback to: funding@culture360.org

If you would like to know more about this initiative or collaborate with us please contact:

Ms Valentina RICCARDI at valentina.riccardi@asef.org

For regular and one-off calls for projects, collaborations and other opportunities to fund international cultural exchange, we invite you to subscribe to <http://culture360.asef.org> and/or the On the Move's newsletter (<http://on-the-move.org>).

Last update: by On the Move, the cultural mobility information network, <http://on-the-move.org>, October 2016.

You are welcome to share this publication on your website or blog. When you share we would appreciate if you could mention the following:

"The Mobility Funding Guides were initiated by the Asia-Europe Foundation (ASEF) through its online portal <http://culture.360.asef.org/> in partnership with On the Move".

NATIONAL AND INTERNATIONAL SOURCES OF FUNDING FOR INDONESIA

<u>NATIONAL SOURCES OF FUNDING</u>	Page
1. Foreign governmental funding	2
1.1 Embassy of the Kingdom of the Netherlands, Jakarta <i>Cultural Exchange Funds</i>	
2. Private foundations	3
2.1 Marinus Plantema Foundation	
2.2 Herb Beith Foundation: <i>the John Darling Fellowship</i>	
3. Foreign national cultural institutes	4
3.1 Australia-Indonesia Institute	
<u>INTERNATIONAL SOURCES OF FUNDING</u>	4

FUNDING AT A GLANCE:

Funding organisations: 4

Funding schemes: 6

Additional sources of funding (focused on Asia): 37

ADDITIONAL RESOURCES:

We advise you to check the websites of the Goethe Institut - Jakarta and the British Council - Indonesia where calls and opportunities may arise:

<https://www.britishcouncil.id/en/uk-indonesia-2016-18>

<https://www.goethe.de/ins/id/en/sta/jak.html>

The views expressed in this publication do not in any way reflect, in part or in whole, the official opinion or position of ASEF, ASEF's partner organisations, or its sponsors.

This publication has been produced with financial assistance of the European Union.

The contents of this publication are the sole responsibility of ASEF and do not reflect the position of the European Union.

NATIONAL SOURCES OF FUNDING

1. Foreign Governmental Funding

1.1. Embassy of the Kingdom of the Netherlands, Jakarta

Cultural Exchange Funds

Description: Indonesia and the Netherlands share a special cultural relationship, shaped by the historical ties between the two countries. In the framework of the Netherlands' international cultural policy, priority is given to cultural co-operation with Indonesia.

The Dutch embassy in Jakarta has • specific funds:

- 1) The Culture and Development Fund for the promotion of cultural identity by giving special attention to the arts sector.
- 2) The Shared Heritage Fund for the preservation of cultural heritage by means of training and education or strengthening the cultural infrastructure in Indonesia.
- 3) The Cultural Co-operation Projects initiated by Indonesian organisations.

These funds can have an international dimension through projects or training in the Netherlands. It is essential that Indonesian artists (and cultural infrastructure) benefit from the project, and that there is a link with the Netherlands. (Public)

Type of Mobility: Scholarships/postgraduate training courses (training in the Netherlands or professional visits linked to the above-mentioned objectives); project and production costs

Sectors: All fields related to culture and development, as well as to the topics of the cultural cooperation funds; cultural heritage

Eligibility criteria:

Nationality: Indonesian

Profession: Culture-related organisations/associations

Destination: Indonesia and the Netherlands

Other priorities: The outcomes can be international but it is important that the projects remain focused on local support with a strong link with the Netherlands. Applications should be submitted along with a business model.

Grant coverage: For the Culture and Development Fund, the Embassy will fund up to either/or a maximum of 75% of the project costs, the total project costs should not exceed EUR 100,000; funding up to 60% and a smaller fund can be availed under the Shared Heritage Fund and the Culture and Cooperation Fund respectively.

Last viewed: 6 October 2016

URL: <http://indonesia.nlembassy.org/organization/departments/public-diplomacy-culture> (under Embassy Funds)

2. Private Foundations

2.1 Marinus Plantema Foundation

Description: The goal of the Marinus Plantema Foundation is the promotion of bilateral relationships between the Netherlands and Indonesia through the support of cultural activities as well as through the facilitation of student exchanges. To achieve this goal the Foundation grants subsidies and donations to qualified applicants. (Private)

Type of mobility: Events participation grants; project and production grants; travel grants

Sectors: All

Eligibility criteria:

Age: Below 65 years old

Nationality: Dutch or Indonesian

Profession: Artists, arts practitioners

Destination: The Netherlands or Indonesia

Other priorities: The application should promote relations between the Netherlands and Indonesia in the field of culture, education and science, and (nature) conservation through the facilitation of students' exchanges. The application budget must include all the details of the total cost and specify other sources of funding.

Grant coverage: The applicant should contribute at least 10% of the requested amount. The diversification of funding sources is required. For the Culture domain an amount of EUR 25-30,000 is available, for Scholarships EUR 15-20,000 and for Science & research EUR 10,000. The board of the Foundation is not strictly bound by these guidelines.

Last viewed: 6 October 2016

URL: http://www.marinusplantemafoundation.nl/Criteria_conditions.php

2.2 Herb Beith Foundation

The John Darling Fellowship

Description: The John Darling Fellowship at the Monash University is supported by the Herb Feith Foundation and was first offered in 2013. The fellowship is designed to train emerging Indonesian documentary filmmakers in Australia so that their film making skills, commercial knowledge and awareness of archiving principles are enhanced. (Public/Private)

Type of mobility: Postgraduate course

Eligibility criteria:

Age: 21-40 years old

Nationality: Indonesian

Profession: Film-makers

Destination: Australia

Grant coverage: Not specified

Last viewed: 6 October 2016

URL: <http://artsonline.monash.edu.au/herb-feith-foundation/applications-open-john-darling-fellowships-2017/>

3. Foreign National Cultural Institutes

3.1 Australia-Indonesia Institute ([Mobility Funding Guide-Australia](#))¹

INTERNATIONAL SOURCES OF FUNDING

Beyond the abovementioned national sources of funding, please find below targeted regional and international sources of funding - both public and private.

Funding organisations and schemes underlined are relevant for Indonesia (on a regular basis or depending on the country in focus for some schemes).

For more details on the funding organisations and related schemes below, please refer to the Cultural Mobility Funding Guide, Focus on Asia: http://culture360.asef.org/wp-content/download/mobility/Asia_MobilityFundingGuide.pdf

1. ORGANISATIONS WITH A PARTICULAR FOCUS ON ASIA AND/OR SOUTHEAST ASIA^{iv}

Page No. 4

- 1.1 Asian Cultural Council
- 1.2 Fundação Oriente
- 1.3 Arts Network Asia
- 1.4 SEAMEO-SPAFA - Regional Centre for Archaeology and Fine Arts
- 1.5 SEASREP Foundation - Southeast Asian Studies Exchange Programme
- 1.6 Fukuoka Asian Art Museum (Japan) - Curators/Researchers and Artists- in-Residence
- 1.7 The Japan Foundation – Asia Centre – Grant programme for promotion of cultural collaboration and Fellowship programme
- 1.8 International House of Japan and the Japan Foundation - Asia Leadership Fellow programme
- 1.9 The Toyota Foundation – International grant programme
- 1.10 Korea Foundation for Advanced Studies - International Scholar Exchange Fellowship
- 1.11 Busan International Film Festival - Asian Film Academy and Asian Project Market
- 1.12 Borak Art Series (Malaysia) – Pitchpad ASEAN
- 1.13 Australian-ASEAN Council – Department for Foreign Affairs and Trade

2. ORGANISATIONS WITH A PARTICULAR FOCUS ON EMERGING AND DEVELOPING COUNTRIES^v - COVERING SOME ASIAN COUNTRIES

Page No. 11

- 2.1 Goethe-Institut - Theatre and dance programme – Guest performances in Germany, Guest programme for young foreign theatre people, Guest performance tours in Germany by musicians from developing or transition countries, International co-production fund
- 2.2 Institute for Foreign Relations, Germany - RAVE Scholarships^{vi} & Artists' Contacts
- 2.3 Prince Claus Fund for Culture and Development - Grants and Collaborations, Ticket Fund
- 2.4 Arts Collaboratory - Grants
- 2.5 Network of South-Asia Goethe Institutes and the British Council – ARThinkSouthAsia
- 2.6 Swiss Art Council - Pro Helvetia - Two Residency Schemes
- 2.7 Artlink, Cultural Cooperation (Supported by the Swiss Agency for Development and Cooperation) – SüdKulturFonds
- 2.8 UNESCO-Keizo Obuchi Research Fellowships Programme; International Fund for Cultural Diversity and International Fund for the Promotion of Culture
- 2.9 International Committee for Museums and Collections of Modern Art - Travel grants programme
- 2.10 ISPA / International Society for the Performing Arts (USA) - Global Fellowship programme
- 2.11 FT/OppenheimerFunds - Emerging Voices Awards
- 2.12 The Aga Khan Foundation - Music initiative
- 2.13 International Film Festival Rotterdam, (Netherlands) - Hubert Bals Fund
- 2.14 Berta Foundation - International Documentary Film Festival Amsterdam Programme: Development and Production & Post-production Funds
- 2.15 Berlinale Film Festival: World Cinema Fund (Germany) - Documentary Film Grants

- 2.16 Institut Français – La Fabrique des Cinémas du Monde
- 2.17 Festival of the Three Continents, Nantes, (France) - *Produire au Sud*
- 2.18 The Films From the South Foundation, (Norway) - *Sorfond*
- 2.19 Visions Sud Est (Switzerland) - *Film production and distribution grants*
- 2.20 Musée du Quai Branly (France) - *Residency*

3. ORGANISATIONS WITH A SPECIFIC COUNTRY COVERAGE INCLUDING SOME COUNTRIES IN ASIA

Page No. 24

- 3.1 Organisation Internationale de la Francophonie – *Funding schemes*
- 3.2 The Commonwealth Foundation – *Grants*
- 3.3 EU funded Global Cultural Diplomacy Platform, *Programmes*
- 3.4 Asia-Europe Foundation (ASEF) – New funding scheme from 2017
- 3.5 British Council – *Creative Economy*
- 3.6 Ministry of Culture and Tourism, Korea – *Cultural Partnership Initiative*
- 3.7 Harvard University – South Asia Institute (USA), *Programme for Visiting Artists from South Asia*
- 3.8 International Education Institute – *Artist Protection Fund*
- 3.9 The Abraaj Group, *Art Prize*
- 3.10 European Audiovisual Entrepreneurs (EAVE) – *Ties That Bind (Asia-Europe Producers)*
- 3.11 International Film Festival Rotterdam – *The Rotterdam Lab*
- 3.12 U.S. Department of State’s Bureau of Educational and Cultural Affairs and the New England Foundation for the Arts – *Centerstage*
- 3.13 U.S. Department of State’s Bureau of Educational and Cultural Affairs and the Bang on a Can’s Found Sound - *OneBeat*

ⁱ. <http://on-the-move.org/funding>

ⁱⁱ. The **Asia-Europe Meeting (ASEM)** is an intergovernmental process established in 1996 to foster dialogue and cooperation between Asia and Europe. ASEM brings together 53 partners (30 European and 21 Asian countries, the European Union, and the ASEAN Secretariat). The 53 ASEM partners are Australia, Austria, Bangladesh, Belgium, Brunei Darussalam, Bulgaria, Cambodia, China, Croatia, Cyprus, the Czech Republic, Denmark, Estonia, Finland, France, Germany, Greece, Hungary, India, Indonesia, Ireland, Italy, Japan, Kazakhstan, Korea, the Lao PDR, Latvia, Lithuania, Luxembourg, Malaysia, Malta, Mongolia, Myanmar, the Netherlands, New Zealand, Norway, Pakistan, the Philippines, Poland, Portugal, Romania, the Russian Federation, Singapore, Slovakia, Slovenia, Spain, Sweden, Switzerland, Thailand, the United Kingdom, Viet Nam, the European Union, and the ASEAN Secretariat. For more information, please visit www.ASEMinfoboard.org

ⁱⁱⁱ. <http://culture360.asef.org/wp-content/download/mobility/How-to-read-the-mobility-funding-guides.pdf>

^{iv}. Knowing that the **notion of “Asia”** does not always encompass the same number of countries and depends on each organisation’s scope, for each scheme we have tried as much as possible to **list only the Asian ASEM partner countries for which applications are open.**

^v. The notion of “emerging” and “developing” countries does not always refer to the same countries for the identified funding organisations. We have tried as much as possible to list the eligible countries from the Asian ASEM partner countries under the various denominations.

^{vi}. With the support of the Alexander Rave Foundation.