

Privacy Settings

We use cookies to optimize our website and our service.

- ☒ Functional
- ☒ Statistics
- ☒ Marketing

Save

Functional only

Accept all

WEBSITE
[HTTP://SALIHARA.ORG/](http://salihara.org/)

COUNTRY
[INDONESIA](#)

DISCIPLINES
[PERFORMING ARTS](#) [VISUAL ARTS](#)

komunitas salihara arts center

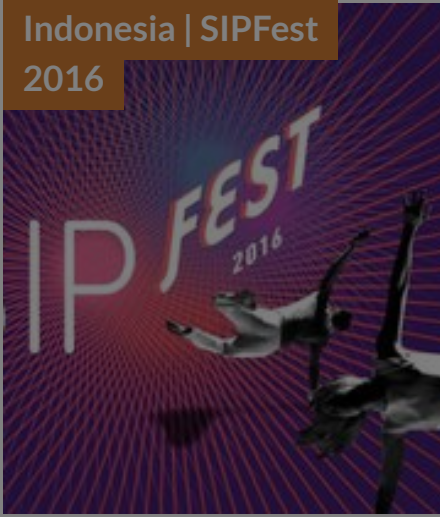
Opened in 2008, Komunitas Salihara is the first privately funded multidisciplinary arts centre in Indonesia. It was established by a group of writers, artists, journalists, and art lovers living in Jakarta, as a new incarnation of Komunitas Utan Kayu; a small arts collective which was started in 1996 and was active both as an arts enclave and a centre for resistance during the last years of the New Order era.

Komunitas Salihara is an arts and cultural centre that is particularly interested in innovative, cutting-edge ideas and works. They hold regular programmes including **performances, exhibitions, readings, lectures and discussions**. They are also interested in collaborative programmes that transcend the boundaries of art and expand networks between artists, art institutions, and the public, both local and international. Each year, they present 80-120 programmes consisting of **performing arts (music, theatre, dance), visual arts, literature, lectures and discussions**.

Similar content

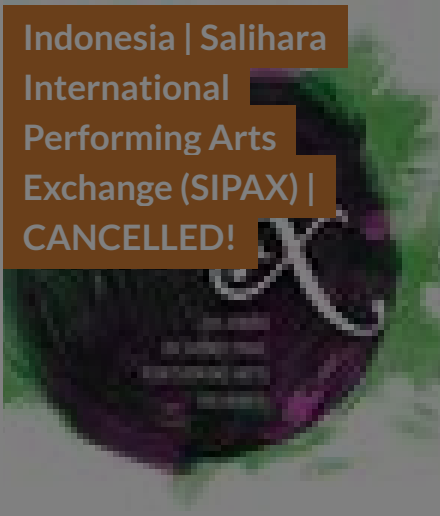
POSTED ON
25 OCT 2016

Indonesia | SIPFest
2016



POSTED ON
04 APR 2013

Indonesia | Salihara
International
Performing Arts
Exchange (SIPAX) |
CANCELLED!



POSTED ON
06 NOV 2013

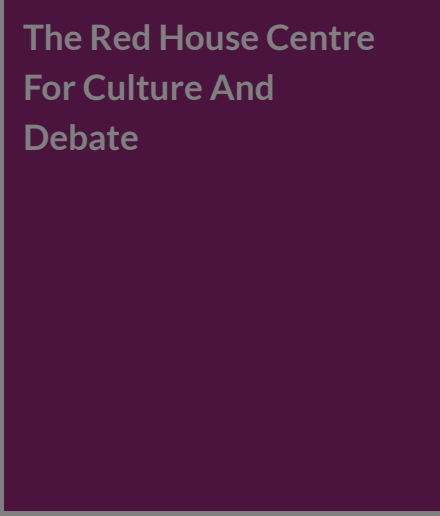
Indonesia Performing
Arts Market 2013



Jakarta 13-16 November 2013

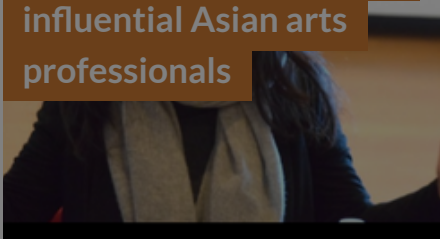
POSTED ON
19 APR 2011

The Red House Centre
For Culture And
Debate



POSTED ON
01 JUN 2016

Japan Foundation Asia
Center | interviews with
influential Asian arts
professionals



"Locally never stop" – The progressive
Jakarta that continues to collaborate
with artists

POSTED ON
28 NOV 2016

Komunitas
Association



ABOUT ASEF CULTURE360

culture360.asef.org brings Asia and Europe closer by providing information, facilitating dialogue and stimulating reflection on the arts and culture of the two regions.

[MORE ABOUT ASEF CULTURE360](#) | [FAQ](#)

