

Privacy Settings

We use cookies to optimize our website and our service.

- ☒ Functional
- ☒ Statistics
- ☒ Marketing

Save

Functional only

Accept all

WEBSITE
[HTTP://WWW.MAGDA-
GALLERY.COM/...](http://www.magda-gallery.com/...)

COUNTRIES
[CHINA](#) [FRANCE](#)

DISCIPLINE
[PHOTOGRAPHY](#)

Shanghai, 1997, French photographer Alain Delorme



Following his three stays in residency in Shanghai, French photographer Alain Delorme presents a major retrospective of his work at the Gallery Magda Danysz in Shanghai, till 1 December. After numerous exhibitions this year, including his participation at the Vevey Images Festival in September 2012, this retrospective is an opportunity to see for the first time ever the complete Little Dolls series and the eighteen pieces of the Totems series done in Shanghai. Alain Delorme practices "pixel surgery". In his Little Dolls photographs, he transforms the images of young girls to question their identity. In his Totems series he explores a booming city through the loads of urban materials carried by the locals. Totems was made in Shanghai and completed in 2012, it presents a critical view of the complexity of society. Alain Delorme gives us an altered reflection of society that brings to light the faults and the most surprising excesses in contemporary times. Between the real and unreal, he stages images that shine brightly, whereby the saturated colours tend to make us forget the subject being photographed. Art critic Raphaële Bertho says "Beyond the balance of these compositions, the author breaks the rules of documentary genre, playing and editing of colour to give us a kind of augmented reality".

Similar content

POSTED ON
10 AUG 2013

This October, The
Whole World Fits in
Lisbon

POSTED ON
02 NOV 2019

Exhibition: "The Dark
Side of the Doll" |
Poland

POSTED ON
23 APR 2016

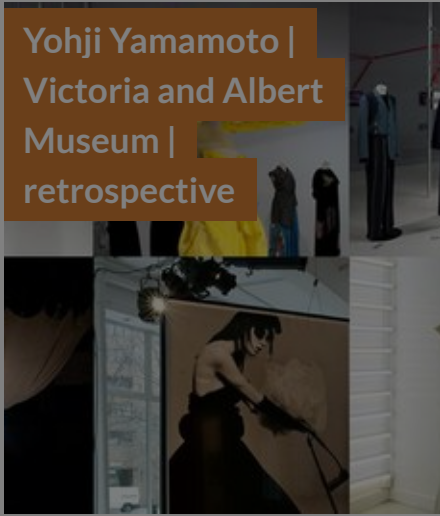
Exhibition: "Dolls:
Faces of Japanese
Tradition" | Poland



POSTED ON
04 SEP 2012



POSTED ON
17 MAY 2011



POSTED ON
17 AUG 2016

Aspan Gallery



ABOUT ASEF CULTURE360

culture360.asef.org brings Asia and Europe closer by providing information, facilitating dialogue and stimulating reflection on the arts and culture of the two regions.

[MORE ABOUT ASEF CULTURE360](#) | [FAQ](#)

